

Unit: mm (ft in)

Specifications

|                    |  |   |
|--------------------|--|---|
| Maximum rated load |  | 35 000 kg (77 200lb) at 3.6m (11'10") working radius                |
| Boom Length        | Basic Boom   | 10.0 m (32'10")   |
|                    | Maximum Boom   | 40.0 m (131'3")   |
|                    | Jib  | 6.10 m (20'0") – 9.15 m (30'0") – 12.20 m (40'0") – 15.25 m (50'0") |
|                    | Maximum boom with jib  | 46.2 m (151'7") [34.0m (111'7") + 12.2 m (40'0")]                   |
| Swing speed        |  | 0 – 4.0 min <sup>-1</sup> (0-4.0 rpm)                               |
| Travel speed       |  | 0-1.8km/h (0-1.12 mph)  |
| Gradeability       |  | 22° (40%)   |
| Operating weight   | Equipped with basic boom, 35 000 kg (77 200lb) capacity hook and 11 600 kg (25 600 lb) counterweight | Approximately 36 600 kg (80 700 lb)                                 |
| Ground pressure    |  | 0.53 bar (0.53 kgf/cm <sup>2</sup> , 7.54 psi)                      |
| Engine             | Model  | HINO H06C-T   |
|                    | Rated horsepower   | 110 kW (150 PS) at 2 000 min <sup>-1</sup> (2000 rpm)               |

Drums

Dimensions

|                 | Rope dia.      | Width           | Drum p.c.d.     | Max. rope capacity |
|-----------------|----------------|-----------------|-----------------|--------------------|
| Main hoist drum | 20 mm (0.787") | 306 mm (12.05") | 420 mm (16.54") | 220 mm (722')      |
| Aux. hoist drum | 20 mm (0.787") | 306 mm (12.05") | 420 mm (16.54") | 220 mm (722')      |

**Hooks**

| Capacity                 | Self-weight        | Number of hoist reeving and maximum rated loads |                          |                          |                          |                          |                          |                         |                              |
|--------------------------|--------------------|---|--------------------------|--------------------------|--------------------------|--------------------------|--------------------------|-------------------------|------------------------------|
|                          |                    | 7   | 6                        | 5                        | 4                        | 3                        | 2                        | 1                       |                              |
| 35 000 kg<br>(77 200 lb) | 390 kg<br>(860 lb) | 35 000 kg<br>(77 200 lb)                        | 32 200 kg<br>(75 400 lb) | 28 500 kg<br>(62 800 lb) | 22 800 kg<br>(50 300 lb) | 17 100 kg<br>(37 700 lb) | 11 400 kg<br>(25 100 lb) |                         | Standard for main boom       |
| 15 000 kg<br>(33 100 lb) | 300 kg<br>(660 lb) |   |                          |                          |                          | 15 000 kg<br>(33 100 lb) | 11 400 kg<br>(25 100 lb) |                         | Optional for main boom       |
| 5 000 kg<br>(11 000 lb)  | 130 kg<br>(287 lb) |   |                          |                          |                          |                          |                          | 5 000 kg<br>(11 000 lb) | Optional for jib or aux. jib |

**Line speed and line pull**

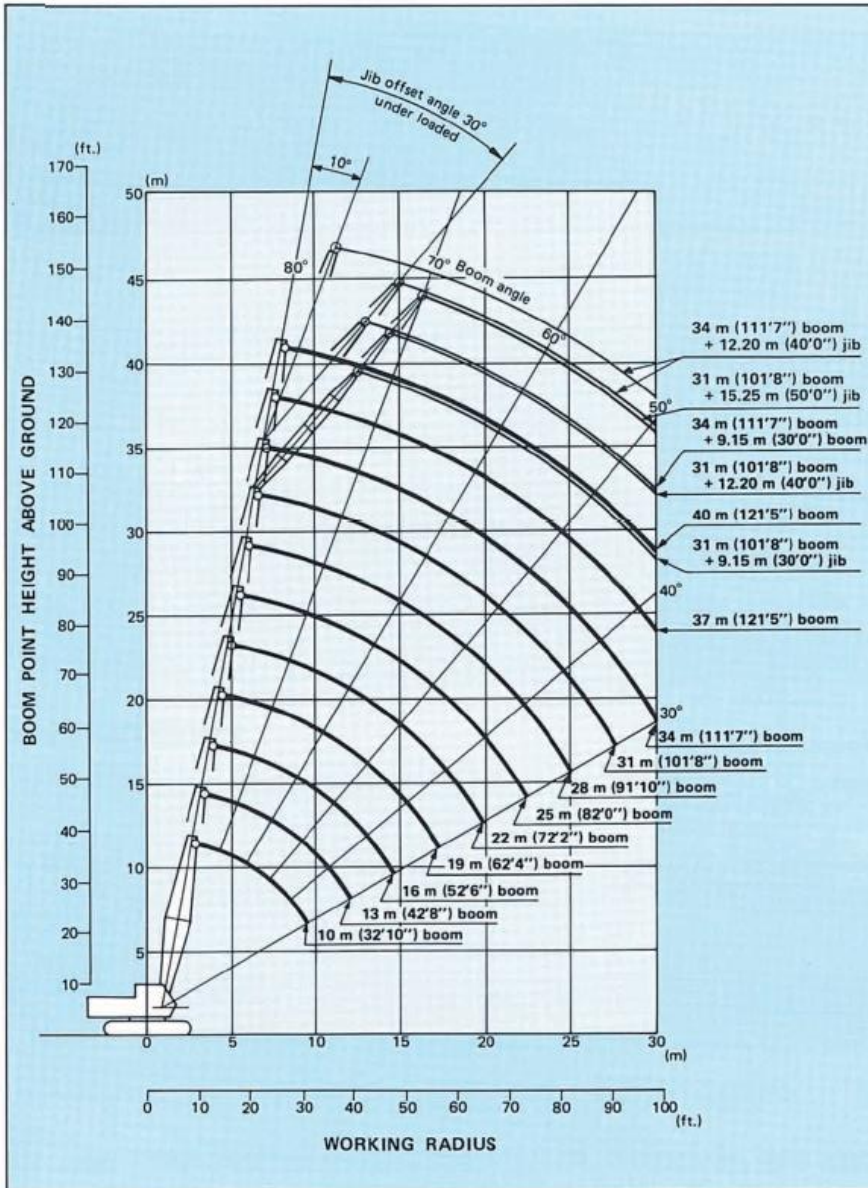
|                 | Max. line speed m/min (ft/min) |          |          |          | Effective line pull @ Line speed                        | Max. starting line pull         | Max. running line pull          |
|-----------------|--------------------------------|----------|----------|----------|---|---------------------------------|---------------------------------|
|                 | Hoisting                       |          | Lowering |          |   |                                 |                                 |
| Main hoist drum | H                              | 70 (230) | H        | 70 (230) | 108 kN (11 000 kgf, 24 300 lbf) @ 34 m/min (112 ft/min) | 137 kN (14 000 kgf, 30 900 lbf) | 143 kN (14 600 kgf, 32 000 lbf) |
|                 | L                              | 35 (115) | L        | 35 (115) |   |                                 |                                 |
| Aux. hoist drum | H                              | 70 (230) | H        | 70 (230) | 108 kN (11 000 kgf, 24 300 lbf) @ 34 m/min (112 ft/min) | 137 kN (14 000 kgf, 30 900 lbf) | 143 kN (14 600 kgf, 32 000 lbf) |
|                 | L                              | 35 (115) | L        | 35 (115) |   |                                 |                                 |

**Notes:**

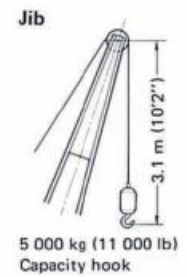
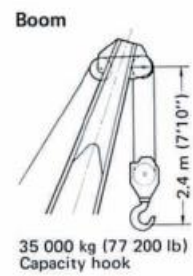
1. Line speed and line pull are based on first layer of winding at rated engine rpm.
2. Hoisting line speed varies with load.
3. Line pull is based on a single line pull in high speed range.
4. Effective line pull is equivalent to available line pull of mechanical drive winch.
5. When starting, hydraulic motor is without rotating, the line pull is "Max. starting line pull". After motor rotating, the line pull becomes "Max. running line pull" shortly.

**Boom hoist drum**

| Rope diameter  | Hoisting line speed   | Lowering line speed   |
|----------------|-----------------------|-----------------------|
| 14 mm (0.551") | 60 m/min (197 ft/min) | 60 m/min (197 ft/min) |



## Hook Clearance



**JIS Rating:**

The rated loads shown don't exceed 78% of tipping loads with the machine on firm ground.

**BS Rating:**

The rated loads are determined according to BS (British Standard; 1981) on condition that the machine is stationed of firm, level ground.

**PCSA Rating:**

The rated loads listed are determined according to PCSA (Power crane and Shovel Association in the USA) and do not Exceed 75% of tipping load on condition that the machine is stationed on firm, level ground.

**Tubular chord crane boom in 360° working area with fully extended side frames**

| Boom length<br>m (ft in) | Working Radius |        | Boom angle<br>degree | Boom point height |        | Rated loads      |                    |        |                      |        |
|--------------------------|----------------|--------|----------------------|-------------------|--------|------------------|--------------------|--------|----------------------|--------|
|                          | m              | ft in  |                      | m                 | ft in  | JIS Rating<br>kg | BS Rating<br>kg lb |        | PCSA Rating<br>kg lb |        |
| 10.0<br>(32'10")         | 3.0            | 9'10"  | 79.26                | 11.3              | 37'1"  | 35 000           | 35 000             | 77 100 | 35 000               | 77 100 |
|                          | 3.5            | 11'6"  | 76.31                | 11.2              | 36'9"  | 35 000           | 35 000             | 77 100 | 35 000               | 77 100 |
|                          | 3.6            | 11'10" | 75.71                | 11.1              | 36'5"  | 35 000           | 35 000             | 77 100 | 36 650               | 74 100 |
|                          | 3.7            | 12'2"  | 75.12                | 11.1              | 36'5"  | 33 450           | 33 450             | 73 700 | 32 100               | 70 700 |
|                          | 4.0            | 13'1"  | 73.32                | 11.0              | 36'1"  | 29 350           | 29 350             | 64 700 | 28 150               | 62 000 |
|                          | 4.5            | 14'9"  | 70.28                | 10.8              | 35'5"  | 24 300           | 24 300             | 53 500 | 23 350               | 51 400 |
|                          | 5.0            | 16'5"  | 67.18                | 10.6              | 34'9"  | 20 750           | 20 750             | 45 700 | 19 900               | 43 800 |
|                          | 6.0            | 19'8"  | 60.72                | 10.1              | 33'2"  | 15 950           | 15 950             | 35 100 | 15 300               | 33 700 |
|                          | 7.0            | 23'0"  | 53.80                | 9.4               | 30'10" | 12 950           | 12 950             | 28 500 | 12 400               | 27 300 |
|                          | 8.0            | 26'3"  | 46.16                | 8.6               | 28'3"  | 10 850           | 10 850             | 23 900 | 10 350               | 22 800 |
| 13.0<br>(42'8")          | 9.0            | 29'6"  | 37.30                | 7.4               | 24'3"  | 9 300            | 9 300              | 20 500 | 8 900                | 19 600 |
|                          | 9.6            | 31'6"  | 30.95                | 6.4               | 21'0"  | 8 500            | 8 500              | 18 700 | 8 100                | 17 800 |
|                          | 3.6            | 11'10" | 79.07                | 14.2              | 46'7"  | 35 000           | 35 000             | 77 100 | 33 600               | 74 000 |
|                          | 3.7            | 12'2"  | 78.62                | 14.2              | 46'7"  | 33 350           | 33 350             | 73 500 | 32 050               | 70 600 |
|                          | 4.0            | 13'1"  | 77.26                | 14.1              | 46'3"  | 29 250           | 29 250             | 64 400 | 28 100               | 61 900 |
|                          | 4.5            | 14'9"  | 74.98                | 14.0              | 45'11" | 24 250           | 24 250             | 53 400 | 23 250               | 51 200 |
|                          | 5.0            | 16'5"  | 72.68                | 13.8              | 45'3"  | 20 650           | 20 650             | 45 500 | 19 800               | 43 600 |
|                          | 6.0            | 19'8"  | 67.96                | 13.5              | 44'4"  | 15 900           | 15 900             | 35 000 | 15 200               | 33 500 |
|                          | 7.0            | 23'0"  | 63.08                | 13.0              | 42'8"  | 12 850           | 12 850             | 28 300 | 12 300               | 27 100 |
|                          | 8.0            | 26'3"  | 57.96                | 12.4              | 40'8"  | 10 750           | 10 750             | 23 600 | 10 250               | 22 500 |
|                          | 9.0            | 29'6"  | 52.52                | 11.7              | 38'5"  | 9 200            | 9 200              | 20 200 | 8 800                | 19 400 |
|                          | 10.0           | 32'10" | 46.64                | 10.8              | 35'5"  | 8 050            | 8 050              | 17 700 | 7 650                | 16 800 |
| 16.0<br>(52'6")          | 12.0           | 39'4"  | 32.44                | 8.3               | 27'3"  | 6 350            | 6 350              | 13 900 | 6 050                | 13 300 |
|                          | 12.2           | 40'0"  | 30.71                | 7.9               | 25'11" | 6 200            | 6 200              | 13 600 | 5 900                | 13 000 |
|                          | 4.1            | 13'5"  | 79.30                | 17.2              | 56'5"  | 28 000           | 29 200             | 64 300 | 28 050               | 61 800 |
|                          | 4.5            | 14'9"  | 77.86                | 17.1              | 56'1"  | 24 200           | 24 200             | 53 000 | 23 200               | 51 100 |
|                          | 5.0            | 16'5"  | 76.01                | 17.0              | 55'9"  | 20 600           | 20 600             | 45 400 | 19 750               | 43 500 |
|                          | 6.0            | 19'8"  | 72.27                | 16.7              | 54'10" | 15 800           | 15 800             | 34 800 | 15 150               | 33 400 |
|                          | 7.0            | 23'0"  | 68.45                | 16.3              | 53'6"  | 12 750           | 12 750             | 28 100 | 12 200               | 26 800 |
|                          | 8.0            | 26'3"  | 64.52                | 15.9              | 52'2"  | 10 650           | 10 650             | 23 400 | 10 200               | 22 400 |
|                          | 9.0            | 29'6"  | 60.45                | 15.3              | 50'2"  | 9 100            | 9 100              | 20 000 | 8 700                | 19 100 |
|                          | 10.0           | 32'10" | 56.20                | 14.7              | 48'3"  | 7 950            | 7 950              | 17 500 | 7 550                | 16 600 |
| 12.0                     | 39'4"          | 46.94  | 13.0                 | 42'8"             | 6 250  | 6 250            | 13 700             | 5 950  | 13 100               |        |
| 14.0                     | 45'11"         | 35.91  | 10.7                 | 35'1"             | 5 150  | 5 100            | 11 200             | 4 850  | 10 600               |        |
| 14.8                     | 48'7"          | 30.56  | 9.4                  | 30'10"            | 4 750  | 4 700            | 10 300             | 4 500  | 9 920                |        |

| Boom length      | Working Radius |        | Boom angle | Boom point height |        | Rated loads |           |        |             |        |
|------------------|----------------|--------|------------|-------------------|--------|-------------|-----------|--------|-------------|--------|
|                  | m              | ft in  |            | m                 | ft in  | JIS Rating  | BS Rating |        | PCSA Rating |        |
| m (ft in)        | m              | ft in  | degree     | m                 | ft in  | kg          | kg        | lb     | kg          | lb     |
| 19.0<br>(62'4")  | 4.6            | 15'1"  | 79.50      | 20.2              | 66'3"  | 23 800      | 24 150    | 53 200 | 23 150      | 51 000 |
|                  | 5.0            | 16'5"  | 78.26      | 20.1              | 65'11" | 20 500      | 20 550    | 45 300 | 19 700      | 43 400 |
|                  | 6.0            | 19'8"  | 75.15      | 19.8              | 65'0"  | 15 750      | 15 750    | 34 700 | 15 100      | 33 200 |
|                  | 7.0            | 23'0"  | 72.00      | 19.5              | 64'0"  | 12 700      | 12 700    | 27 900 | 12 150      | 26 700 |
|                  | 8.0            | 26'3"  | 68.78      | 19.1              | 62'8"  | 10 600      | 10 600    | 23 300 | 10 150      | 22 300 |
|                  | 9.0            | 29'6"  | 65.49      | 18.7              | 61'4"  | 9 050       | 9 050     | 19 900 | 8 650       | 19 000 |
|                  | 10.0           | 32'10" | 62.11      | 18.2              | 59'4"  | 7 900       | 7 900     | 17 400 | 7 500       | 16 500 |
|                  | 12.0           | 39'4"  | 54.98      | 16.9              | 55'5"  | 6 200       | 6 200     | 13 600 | 5 900       | 13 000 |
|                  | 14.0           | 45'11" | 47.14      | 15.3              | 50'2"  | 5 050       | 5 000     | 11 000 | 4 800       | 10 500 |
|                  | 16.0           | 52'6"  | 38.10      | 13.0              | 42'8"  | 4 250       | 4 200     | 9 250  | 4 000       | 8 810  |
| 17.4             | 57'1"          | 30.46  | 10.9       | 35'9"             | 3 800  | 3 700       | 8 150     | 3 550  | 7 820       |        |
| 22.0<br>(72'2")  | 5.1            | 16'9"  | 79.60      | 23.1              | 75'9"  | 20 000      | 20 500    | 45 100 | 19 650      | 43 300 |
|                  | 6.0            | 19'8"  | 77.22      | 22.9              | 75'2"  | 15 700      | 15 700    | 34 600 | 15 050      | 33 100 |
|                  | 7.0            | 23'0"  | 74.53      | 22.6              | 74'2"  | 12 650      | 12 650    | 27 800 | 12 100      | 26 600 |
|                  | 8.0            | 26'3"  | 71.80      | 22.3              | 73'2"  | 10 550      | 10 550    | 23 200 | 10 050      | 22 100 |
|                  | 9.0            | 29'6"  | 69.02      | 22.0              | 72'2"  | 9 000       | 9 000     | 19 800 | 8 600       | 18 900 |
|                  | 10.0           | 32'10" | 66.19      | 21.5              | 70'6"  | 7 800       | 7 800     | 17 100 | 7 450       | 16 400 |
|                  | 12.0           | 39'4"  | 60.33      | 20.5              | 67'3"  | 6 100       | 6 100     | 13 400 | 5 800       | 12 700 |
|                  | 14.0           | 45'11" | 54.08      | 19.2              | 63'0"  | 5 000       | 4 900     | 10 800 | 4 700       | 10 300 |
|                  | 16.0           | 52'6"  | 47.29      | 17.5              | 57'5"  | 4 150       | 4 100     | 9 030  | 3 950       | 8 700  |
|                  | 18.0           | 59'1"  | 39.62      | 15.4              | 50'6"  | 3 550       | 3 450     | 7 600  | 3 350       | 7 380  |
| 20.0             | 65'7"          | 30.38  | 12.4       | 40'8"             | 3 050  | 2 950       | 6 500     | 2 850  | 6 280       |        |
| 25.0<br>(82'0")  | 6.0            | 19'8"  | 78.78      | 26.0              | 85'4"  | 15 650      | 15 650    | 34 500 | 15 000      | 33 000 |
|                  | 7.0            | 23'0"  | 76.43      | 25.8              | 84'8"  | 12 600      | 12 600    | 27 700 | 12 050      | 26 500 |
|                  | 8.0            | 26'3"  | 74.05      | 25.5              | 83'8"  | 10 500      | 10 500    | 23 100 | 10 000      | 22 000 |
|                  | 9.0            | 29'6"  | 71.65      | 25.2              | 82'8"  | 8 950       | 8 950     | 19 700 | 8 500       | 18 700 |
|                  | 10.0           | 32'10" | 69.20      | 24.8              | 81'4"  | 7 750       | 7 750     | 17 000 | 7 400       | 16 300 |
|                  | 12.0           | 39'4"  | 64.19      | 23.9              | 78'5"  | 6 050       | 6 000     | 13 200 | 5 750       | 12 600 |
|                  | 14.0           | 45'11" | 58.95      | 22.8              | 74'10" | 4 900       | 4 850     | 10 600 | 4 650       | 10 200 |
|                  | 16.0           | 52'6"  | 53.39      | 21.4              | 70'3"  | 4 100       | 4 000     | 8 810  | 3 850       | 8 480  |
|                  | 18.0           | 59'1"  | 47.40      | 19.7              | 64'8"  | 3 450       | 3 350     | 7 380  | 3 250       | 7 160  |
|                  | 20.0           | 65'7"  | 40.73      | 17.6              | 57'9"  | 2 950       | 2 850     | 6 280  | 2 800       | 6 170  |
|                  | 22.0           | 72'2"  | 32.99      | 14.9              | 48'11" | 2 600       | 2 450     | 5 400  | 2 400       | 5 290  |
|                  | 22.6           | 74'2"  | 30.33      | 13.9              | 45'7"  | 2 500       | 2 350     | 5 180  | 2 300       | 5 070  |
| 28.0<br>(91'10") | 6.5            | 21'4"  | 79.00      | 29.0              | 95'2"  | 14 000      | 15 550    | 34 200 | 14 900      | 32 800 |
|                  | 7.0            | 23'0"  | 77.91      | 28.8              | 94'6"  | 12 500      | 12 500    | 27 500 | 11 950      | 26 300 |
|                  | 8.0            | 26'3"  | 75.80      | 28.6              | 93'10" | 10 400      | 10 400    | 22 900 | 9 900       | 21 800 |
|                  | 9.0            | 29'6"  | 73.68      | 28.3              | 92'10" | 8 850       | 8 850     | 19 500 | 8 450       | 18 600 |
|                  | 10.0           | 32'10" | 71.53      | 28.0              | 91'10" | 7 650       | 7 650     | 16 800 | 7 300       | 16 000 |
|                  | 12.0           | 39'4"  | 67.14      | 27.2              | 89'3"  | 5 950       | 5 900     | 13 000 | 5 650       | 12 400 |
|                  | 14.0           | 45'11" | 62.60      | 26.3              | 86'3"  | 4 800       | 4 750     | 10 400 | 4 550       | 10 000 |
|                  | 16.0           | 52'6"  | 57.86      | 25.1              | 82'4"  | 4 000       | 3 900     | 8 590  | 3 750       | 8 260  |
|                  | 18.0           | 59'1"  | 52.85      | 23.7              | 77'9"  | 3 350       | 3 250     | 7 160  | 3 150       | 6 940  |
|                  | 20.0           | 65'7"  | 47.48      | 22.0              | 72'2"  | 2 850       | 2 750     | 6 060  | 2 700       | 5 950  |
|                  | 22.0           | 72'2"  | 41.59      | 19.9              | 65'4"  | 2 500       | 2 350     | 5 180  | 2 300       | 5 070  |
|                  | 24.0           | 78'9"  | 34.91      | 17.3              | 56'9"  | 2 150       | 2 000     | 4 400  | 2 000       | 4 400  |
| 25.2             | 82'8"          | 30.28  | 15.4       | 50'6"             | 2 000  | 1 850       | 4 070     | 1 850  | 4 070       |        |



| Boom length<br>m (ft in) | Working Radius |        | Boom angle<br>degree | Boom point height |         | Rated loads      |                    |        |                      |        |
|--------------------------|----------------|--------|----------------------|-------------------|---------|------------------|--------------------|--------|----------------------|--------|
|                          | m              | ft in  |                      | m                 | ft in   | JIS Rating<br>kg | BS Rating<br>kg lb |        | PCSA Rating<br>kg lb |        |
| 31.0<br>(101'9")         | 7.0            | 23'0"  | 79.10                | 31.9              | 104'8"  | 12 450           | 12 450             | 27 400 | 11 900               | 26 200 |
|                          | 8.0            | 26'3"  | 77.20                | 31.7              | 104'0"  | 10 350           | 10 350             | 22 800 | 9 900                | 21 800 |
|                          | 9.0            | 29'6"  | 75.30                | 31.4              | 103'0"  | 8 800            | 8 800              | 19 400 | 8 400                | 18 500 |
|                          | 10.0           | 32'10" | 73.37                | 31.1              | 102'0"  | 7 600            | 7 600              | 16 700 | 7 250                | 15 900 |
|                          | 12.0           | 39'4"  | 69.46                | 30.5              | 100'1"  | 5 900            | 5 850              | 12 800 | 5 600                | 12 300 |
|                          | 14.0           | 45'11" | 65.45                | 29.6              | 97'1"   | 4 750            | 4 700              | 10 300 | 4 500                | 9 920  |
|                          | 16.0           | 52'6"  | 61.29                | 28.6              | 93'10"  | 3 950            | 3 800              | 8 370  | 3 700                | 8 150  |
|                          | 18.0           | 59'1"  | 56.97                | 27.4              | 89'11"  | 3 300            | 3 200              | 7 050  | 3 100                | 6 830  |
|                          | 20.0           | 65'7"  | 52.41                | 25.9              | 85'0"   | 2 800            | 2 700              | 5 950  | 2 650                | 5 840  |
|                          | 22.0           | 72'2"  | 47.55                | 24.2              | 79'5"   | 2 400            | 2 250              | 4 960  | 2 250                | 4 960  |
|                          | 24.0           | 78'9"  | 42.27                | 22.2              | 72'10"  | 2 100            | 1 950              | 4 290  | 1 950                | 4 290  |
| 26.0                     | 85'4"          | 36.38  | 19.7                 | 64'8"             | 1 850   | 1 650            | 3 630              | 1 700  | 3 740                |        |
| 27.8                     | 91'3"          | 30.25  | 16.9                 | 55'5"             | 1 650   | 1 450            | 3 190              | 1 500  | 3 300                |        |
| 34.0<br>(111'7")         | 8.0            | 26'3"  | 78.35                | 34.8              | 114'2"  | 10 250           | 10 250             | 22 500 | 9 800                | 21 600 |
|                          | 9.0            | 29'6"  | 76.62                | 34.5              | 113'2"  | 8 700            | 8 700              | 19 100 | 8 300                | 18 200 |
|                          | 10.0           | 32'10" | 74.88                | 34.3              | 112'6"  | 7 500            | 7 500              | 16 500 | 7 150                | 15 700 |
|                          | 12.0           | 39'4"  | 71.35                | 33.6              | 110'3"  | 5 850            | 5 750              | 12 600 | 5 550                | 12 200 |
|                          | 14.0           | 45'11" | 67.74                | 32.9              | 107'11" | 4 650            | 4 550              | 10 000 | 4 400                | 9 700  |
|                          | 16.0           | 52'6"  | 64.04                | 32.0              | 105'0"  | 3 850            | 3 700              | 8 150  | 3 600                | 7 930  |
|                          | 18.0           | 59'1"  | 60.21                | 30.9              | 101'5"  | 3 200            | 3 050              | 6 720  | 3 000                | 6 610  |
|                          | 20.0           | 65'7"  | 56.23                | 29.6              | 97'1"   | 2 700            | 2 550              | 5 620  | 2 550                | 5 620  |
|                          | 22.0           | 72'2"  | 52.05                | 28.2              | 92'6"   | 2 300            | 2 150              | 4 730  | 2 150                | 4 730  |
|                          | 24.0           | 78'9"  | 47.61                | 26.5              | 86'11"  | 2 000            | 1 850              | 4 070  | 1 850                | 4 070  |
|                          | 26.0           | 85'4"  | 42.82                | 24.4              | 80'1"   | 1 750            | 1 550              | 3 410  | 1 600                | 3 520  |
|                          | 28.0           | 91'10" | 37.56                | 22.0              | 72'2"   | 1 500            | 1 350              | 2 970  | 1 400                | 3 080  |
|                          | 30.0           | 98'5"  | 31.55                | 19.1              | 62'8"   | 1 300            | 1 150              | 2 530  | 1 200                | 2 640  |
| 30.5                     | 100'1"         | 30.00  | 18.4                 | 60'4"             | 1 200   | 1 050            | 2 310              | 1 100  | 2 420                |        |
| 37.0<br>(121'5")         | 8.0            | 26'3"  | 79.31                | 37.8              | 124'0"  | 10 250           | 10 250             | 22 500 | 9 800                | 21 600 |
|                          | 9.0            | 29'6"  | 77.73                | 37.6              | 123'4"  | 8 700            | 8 700              | 19 100 | 8 300                | 18 200 |
|                          | 10.0           | 32'10" | 76.13                | 37.4              | 122'9"  | 7 500            | 7 450              | 16 400 | 7 150                | 15 700 |
|                          | 12.0           | 39'4"  | 72.91                | 36.8              | 120'9"  | 5 800            | 5 700              | 12 500 | 5 500                | 12 100 |
|                          | 14.0           | 45'11" | 69.64                | 36.1              | 118'5"  | 4 650            | 4 550              | 10 000 | 4 400                | 9 700  |
|                          | 16.0           | 52'6"  | 66.29                | 35.3              | 115'10" | 3 800            | 3 650              | 8 040  | 3 600                | 7 930  |
|                          | 18.0           | 59'1"  | 62.85                | 34.3              | 112'6"  | 3 150            | 3 050              | 6 720  | 3 000                | 6 610  |
|                          | 20.0           | 65'7"  | 59.29                | 33.2              | 108'11" | 2 700            | 2 500              | 5 510  | 2 500                | 5 510  |
|                          | 22.0           | 72'2"  | 55.60                | 31.9              | 104'8"  | 2 300            | 2 100              | 4 620  | 2 100                | 4 620  |
|                          | 24.0           | 78'9"  | 51.74                | 30.4              | 99'9"   | 1 950            | 1 800              | 3 960  | 1 800                | 3 960  |
|                          | 26.0           | 85'4"  | 47.66                | 28.7              | 94'2"   | 1 700            | 1 500              | 3 300  | 1 550                | 3 410  |
|                          | 28.0           | 91'10" | 43.28                | 26.7              | 87'7"   | 450              | 1 250              | 2 750  | 1 350                | 2 970  |
|                          | 30.0           | 98'5"  | 38.51                | 24.4              | 80'1"   | 1 200            | 1 050              | 2 310  | 1 150                | 2 530  |
|                          | 32.0           | 105'0" | 33.18                | 21.6              | 70'10"  | 1 000            | 900                | 1 980  | 1 000                | 2 200  |

| Boom length<br>m (ft in) | Working Radius |        | Boom angle<br>degree | Boom point height |         | Rated loads      |                    |        |                      |        |
|--------------------------|----------------|--------|----------------------|-------------------|---------|------------------|--------------------|--------|----------------------|--------|
|                          | m              | ft in  |                      | m                 | ft in   | JIS Rating<br>kg | BS Rating<br>kg lb |        | PCSA Rating<br>kg lb |        |
| 40.0<br>(131'3")         | 9.0            | 29'6"  | 78.66                | 40.7              | 133'6"  | 8 600            | 8 600              | 18 900 | 8 200                | 18 000 |
|                          | 10.0           | 32'10" | 77.19                | 40.5              | 132'11" | 7 400            | 7 350              | 16 200 | 7 050                | 15 500 |
|                          | 12.0           | 39'4"  | 74.23                | 39.9              | 130'11" | 5 700            | 5 600              | 12 300 | 5 400                | 11 900 |
|                          | 14.0           | 45'11" | 71.23                | 39.3              | 128'11" | 4 550            | 4 450              | 9 810  | 4 300                | 9 450  |
|                          | 16.0           | 52'6"  | 68.17                | 38.6              | 126'8"  | 3 700            | 3 550              | 7 820  | 3 500                | 7 710  |
|                          | 18.0           | 59'1"  | 65.04                | 37.7              | 123'8"  | 3 100            | 2 900              | 6 390  | 2 900                | 6 390  |
|                          | 20.0           | 65'7"  | 61.82                | 36.7              | 120'5"  | 2 600            | 2 400              | 5 290  | 2 400                | 5 290  |
|                          | 22.0           | 72'2"  | 58.51                | 35.5              | 116'6"  | 2 200            | 2 000              | 4 400  | 2 050                | 4 510  |
|                          | 24.0           | 78'9"  | 55.07                | 34.2              | 112'3"  | 1 850            | 1 650              | 3 630  | 1 700                | 3 740  |
|                          | 26.0           | 85'4"  | 51.48                | 32.7              | 107'3"  | 1 550            | 1 400              | 3 080  | 1 450                | 3 190  |
|                          | 28.0           | 91'10" | 47.70                | 30.9              | 101'5"  | 1 300            | 1 150              | 2 530  | 1 250                | 2 750  |
|                          | 30.0           | 98'5"  | 43.67                | 29.0              | 95'2"   | 1 100            | 950                | 2 090  | 1 050                | 2 310  |
| 32.0                     | 105'0"         | 39.31  | 26.7                 | 87'7"             | 900     | 800              | 1 760              | 900    | 1 980                |        |

### Rated load for main boom

Notes:

1. The rated loads shown are based on the machine being used on firm level ground without travelling.
2. The rated loads shown include the weights of all lifting attachments, such as hook and bucket. The load to be actually lifted is the rated load minus the weight of all the lifting attachments.
3. When the job or the auxiliary jib is attached, the load to be actually lifted is rated load minus the weight listed below.

| Jib length           | 6.10 m<br>(20'0")    | 9.15 m<br>(30'0")    | 12.2 m<br>(40'0")      | 15.25 m<br>(50'0")     | Aux. job           |
|----------------------|----------------------|----------------------|------------------------|------------------------|--------------------|
| Weight to be reduced | 700 kg<br>(1 540 lb) | 850 kg<br>(1 870 lb) | 1 000 kg<br>(2 200 lb) | 1 150 kg<br>(2 540 lb) | 200 kg<br>(440 lb) |

4. The jib can be attached to boom of 19.0 m (62'4") to 34.0 m (111'7") long.
5. The auxiliary job can be attached to boom of 10.0 m (32'10") to 37.0 m (121'5") long.
6. The rated load for auxiliary jib is equal to that of main boom at the same working radius, but do not exceed maximum rated load 5 000 kg (11 000 lb).
7. Counterweight is 11 600 kg (25 600 lb).
8. In operation, crawlers must be extended.

### Rated load for jib

#### Maximum jib rating

| Jib length       |     | 6.10 m<br>(20'0")       | 9.15 m<br>(30'0")       | 12.20 m<br>(40'0")     | 15.25 m<br>(50'0")     |
|------------------|-----|-------------------------|-------------------------|------------------------|------------------------|
| Jib offset angle |     |                         |                         |                        |                        |
| Max. rated load  | 10° | 5 000 kg<br>(11 000 lb) | 5 000 kg<br>(11 000 lb) | 4 000 kg<br>(8 820 lb) | 3 200 kg<br>(7 050 lb) |
|                  | 30° | 5 000 kg<br>(11 000 lb) | 5 000 kg<br>(11 000 lb) | 4 000 kg<br>(8 820 lb) | 3 200 kg<br>(7 050 lb) |

**Notes:**

1. The rated load for jib is equal to that of the main boom at the same working radius but should not exceed maximum jib ratings shown.
2. The jib offset angle to the main boom is 10° and 30° under loads condition.
3. The maximum working radius of the job do not exceed that of the main boom used.

**Main Boom & JIB Construction**

| Boom length                       |                  | 10.0 m<br>(32'10")         | 13.0 m<br>(42'8") | 16.0 m<br>(52'6") | 19.0 m<br>(62'4") | 22.0 m<br>(72'2") | 25.0 m<br>(82'0") | 28.0 m<br>(91'10")         | 31.0 m<br>(101'8") | 34.0 m<br>(111'7") | 37.0 m<br>(121'5") | 40.0 m<br>(131'3") |  |  |  |
|-----------------------------------|------------------|----------------------------|-------------------|-------------------|-------------------|-------------------|-------------------|----------------------------|--------------------|--------------------|--------------------|--------------------|--|--|--|
| Element                           |                  |                            |                   |                   |                   |                   |                   |                            |                    |                    |                    |                    |  |  |  |
| Lower boom                        | 5.5 m<br>(18'1") | 1                          | 1                 | 1                 | 1                 | 1                 | 1                 | 1                          | 1                  | 1                  | 1                  | 1                  |  |  |  |
| Upper boom                        | 4.5 m<br>(16'5") | 1                          | 1                 | 1                 | 1                 | 1                 | 1                 | 1                          | 1                  | 1                  | 1                  | 1                  |  |  |  |
| Boom insert                       | 3.0m<br>(9'10")  | —                          | 1                 | 2                 | 1                 | 2                 | 1                 | 2                          | 1                  | 2                  | 1                  | 2                  |  |  |  |
| Boom insert                       | 6.0 m<br>(19'8") | —                          | —                 | —                 | 1                 | 1                 | 2                 | 2                          | 3                  | 3                  | 4                  | 4                  |  |  |  |
| Available hook                    |                  | 35 000 kg (77 200 lb) hook |                   |                   |                   |                   |                   | 15 000 kg (33 100 lb) hook |                    |                    |                    |                    |  |  |  |
| Number of rope reeving            |                  | 7                          | 7                 | 6                 | 5                 | 4                 | 3                 | 3                          | 3                  | 2                  | 2                  | 2                  |  |  |  |
| Boom available with jib           |                  | X                          |                   |                   |                   |                   |                   |                            |                    |                    |                    | X                  |  |  |  |
| Boom available with auxiliary jib |                  |                            |                   |                   |                   |                   |                   |                            |                    |                    |                    |                    |  |  |  |

**Main Boom & JIB Construction**

| Jib length     |                   | 6.10 m<br>(20'0")         | 9.15 m<br>(30'0") | 12.20 m<br>(40'0") | 15.25 m<br>(50'0") |
|----------------|-------------------|---------------------------|-------------------|--------------------|--------------------|
| Element        |                   |                           |                   |                    |                    |
| Lower jib      | 3.05 m<br>(10'0") | 1                         | 1                 | 1                  | 1                  |
| Upper jib      | 3.05 m<br>(10'0") | 1                         | 1                 | 1                  | 1                  |
| Jib insert     | 3.05m<br>(10'0")  | —                         | 1                 | 2                  | 3                  |
| Available hook |                   | 5 000 kg (11 000 lb) hook |                   |                    |                    |

**Auxiliary jib (optional)**

Attachable to the main boom top for hoisting lightweight load quickly with a single rope used. (For safety: Don't use the main and auxiliary hooks at the same time)

