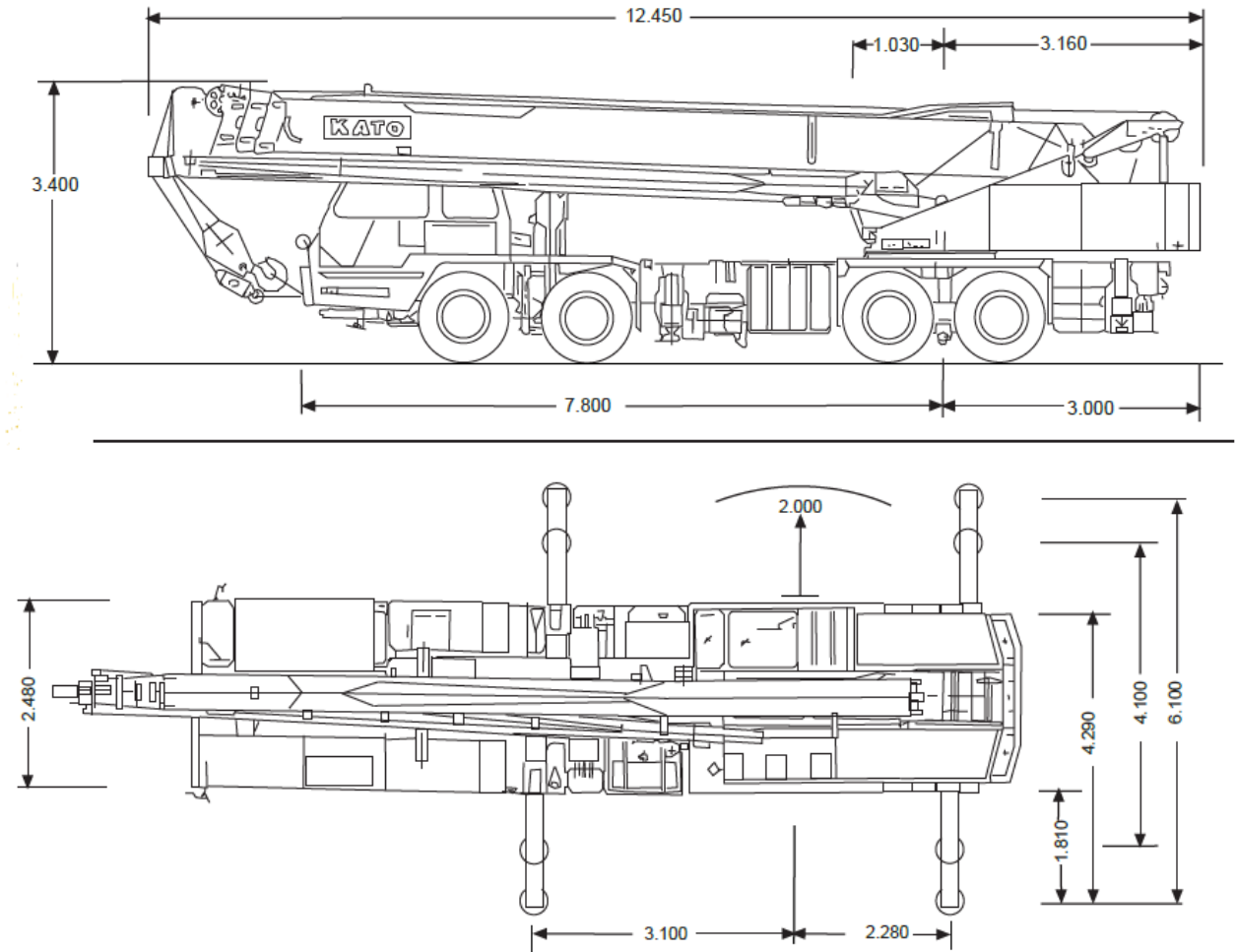
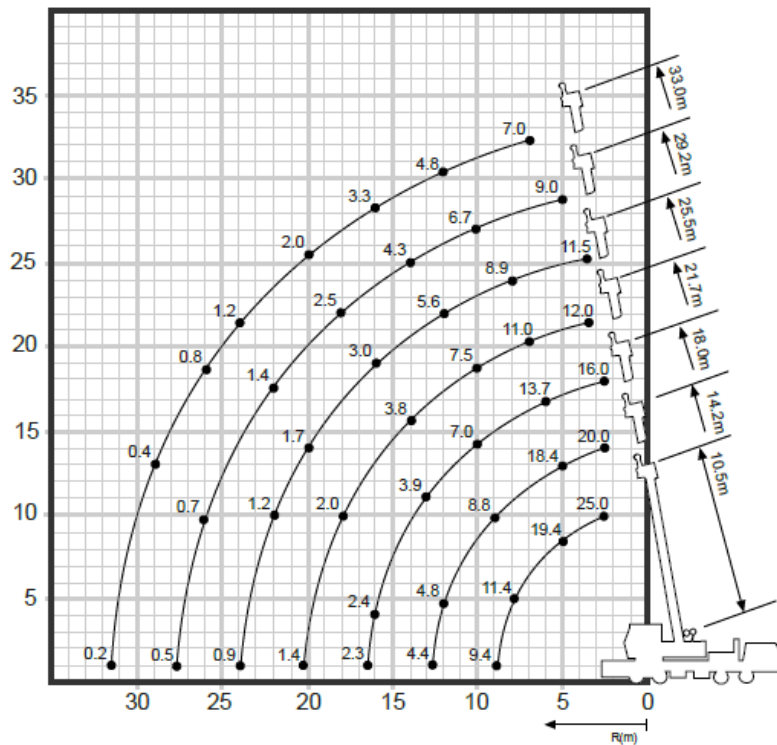


30 Tonne Dimensions



30 Tonne Working Range



30 TONNE

KATO NK 250V

Rated Lifting Capacity Chart (1)

- Outriggers Fully Extended with Front Jack (360° Full Range)
- Outriggers Fully Extended Without Front Jack (Over Side & Over Rear)

Work Radius (m)	10.5m Boom	14.2m Boom	18.0m Boom	21.7m Boom	25.5m Boom	29.2m Boom	33.0m Boom
2.5	25.00	20.00	16.00				
3.0	25.00	20.00	16.00				
3.5	25.00	20.00	16.00	12.00			
4.0	22.90	20.00	16.00	12.00	11.50		
4.5	21.00	20.00	16.00	12.00	11.50		
5.0	19.40	18.40	16.00	12.00	11.50	9.00	
6.0	16.20	15.30	13.73	12.00	11.50	9.00	
7.0	13.70	12.65	11.95	11.00	10.00	9.00	7.00
8.0	11.43	10.56	10.39	10.20	8.90	8.20	7.00
8.8	9.40	9.18	9.07	9.40	8.25	7.60	6.40
9.0		8.88	8.67	9.10	8.05	7.45	6.25
10.0		7.20	7.04	7.58	7.30	6.75	5.70
12.0		4.87	4.76	5.29	5.61	5.65	4.80
12.5		4.41	4.35	4.83	5.16	5.32	4.55
13.0			3.99	4.43	4.80	4.92	4.45
14.0			3.33	3.82	4.09	4.31	4.10
16.0			2.42	2.80	3.02	3.29	3.35
16.3			2.32	2.70	2.92	3.19	3.25
18.0				2.09	2.31	2.53	2.64
20.0				1.48	1.70	1.92	2.03
22.0					1.24	1.41	1.52
23.8					0.94	1.06	1.22
26.0						0.75	0.86
27.5						0.50	0.71
29.0							0.46
31.3							0.25
Standard Hook	for 25 ton						
Hook Weight	280 kgs						
Parts of Line	8			4			
Critical Boom Angle	-	-	-	-	-	-	-

Rated Lifting Capacity Chart (2)

- Outriggers Intermediately Extended Without Front Jack (360° Full Range)
- Outriggers Fully Extended Without Front Jack (Over Front)

Work Radius (m)	10.5m Boom	14.2m Boom	18.0m Boom	21.7m Boom	25.5m Boom	29.2m Boom	33.0m Boom
2.5	25.00	20.00	16.00				
3.0	25.00	20.00	16.00				
3.5	25.00	20.00	16.00	12.00			
4.0	22.61	20.00	16.00	12.00	11.50		
4.2	19.92	19.40	16.00	12.00	11.50	9.00	
4.6	16.77	16.30	15.98	12.00	11.50	9.00	
5.5	12.04	11.72	11.46	11.95	11.46	9.00	7.00
6.0	10.16	9.90	9.63	10.12	10.08	9.00	7.00
6.6	8.44	8.27	8.01	8.49	8.76	8.93	7.00
7.0	7.62	7.41	7.14	7.68	7.95	8.12	7.00
7.7	6.35	6.14	5.92	6.41	6.68	6.85	6.91
8.8	4.73	4.71	4.50	4.93	5.21	5.37	5.49
9.0		4.46	4.30	4.73	5.00	5.17	5.28
10.0		3.44	3.28	3.72	4.04	4.15	4.32
12.0		1.97	1.86	2.34	2.62	2.78	2.95
12.5		1.67	1.56	2.04	2.36	2.53	2.69
13.0			1.30	1.79	2.11	2.27	2.44
14.0			0.79	1.33	1.65	1.87	1.98
15.0			0.44	0.92	1.24	1.46	1.62
16.0			0.13	0.57	0.89	1.11	1.32
17.0				0.31	0.58	0.85	1.01
18.0					0.38	0.60	0.76
19.0						0.34	0.51
20.0							0.48
Standard Hook	for 25 ton						
Hook Weight	280 kgs						
Parts of Line	8			4			
Critical Boom Angle	-	-	-	25°	35°	42°	47°

Rated Lifting Capacity Chart (3)

- * 33m Boom + 8.7m Jib
- Outriggers Fully Extended with Front Jack (360° Full Range)
- Outriggers Fully Extended without Front Jack (Over Side & Over Rear)

Boom Angle (°)	Offset 5°		Offset 17°		Offset 30°	
	Work Radius (m)	Load (t)	Work Radius (m)	Load (t)	Work Radius (m)	Load (t)
80.0	8.0	3.00	9.6	2.20	11.3	1.60
76.0	11.0	3.00	12.5	2.20	14.0	1.60
74.0	12.5	2.72	14.0	2.05	15.3	1.54
70.0	15.3	2.26	16.6	1.78	18.0	1.45
66.0	18.0	1.92	19.2	1.57	20.4	1.30
62.0	20.5	1.68	21.8	1.38	22.8	1.17
58.0	23.0	1.28	24.1	1.24	25.0	1.06
56.0	24.0	1.08	25.2	0.98	26.0	1.02
54.0	25.1	0.88	26.3	0.80	27.1	0.78
50.0	27.2	0.53	28.2	0.49	29.0	0.47
46.0	29.2	0.26	30.1	0.23	30.7	0.23
43.0	30.6	0.08	31.5	0.09	32.2	0.09
Standard Hook	for 3.4 ton					
Hook Weight	60 kgs					
Parts of Line	1					
Critical Boom Angle	40°					

- * 33m Boom + 14.5m Jib
- Outriggers Fully Extended with Front Jack (360° Full Range)
- Outriggers Fully Extended without Front Jack (Over Side and Over Rear)

Boom Angle (°)	Offset 5°		Offset 17°		Offset 30°	
	Work Radius (m)	Load (t)	Work Radius (m)	Load (t)	Work Radius (m)	Load (t)
80.0	9.9	2.00	12.5	1.30	15.1	0.90
77.7	12.0	2.00	14.5	1.30	16.9	0.90
76.3	13.2	1.85	15.7	1.24	18.0	0.90
72.0	16.4	1.50	19.0	1.06	21.2	0.81
68.0	19.5	1.25	22.0	0.91	24.0	0.74
64.0	22.6	1.06	24.8	0.79	26.6	0.67
60.0	25.4	0.90	27.4	0.70	29.1	0.60
56.0	28.0	0.77	29.9	0.64	31.5	0.55
52.0	30.7	0.48	32.4	0.57	33.7	0.52
51.0	31.2	0.43	33.0	0.37	34.2	0.51
50.4	31.6	0.39	33.3	0.34	34.5	0.33
48.0	32.9	0.26	34.5	0.22	35.6	0.20
46.0	33.9	0.16	35.2	0.15	36.5	0.12
Standard Hook	for 3.4 ton					
Hook Weight	60 kgs					
Parts of Line	1					
Critical Boom Angle	42°					

Rated Lifting Capacity Chart (4)

- * 33m Boom + 8.7m Jib
- Outriggers Intermediately Extended without Front Jack (360° Full Range)
- Outriggers Fully Extended without Front Jack (Over Front)

Boom Angle (°)	Offset 5°		Offset 17°		Offset 30°	
	Work Radius (m)	Load (t)	Work Radius (m)	Load (t)	Work Radius (m)	Load (t)
80.0	8.0	3.00	9.6	2.20	11.3	1.60
76.0	11.0	3.00	12.5	2.20	14.0	1.60
72.5	13.5	2.38	15.0	1.94	16.2	1.50
71.0	14.5	1.96	16.0	1.66	17.3	1.47
70.0	15.1	1.71	16.6	1.47	18.0	1.27
68.0	16.3	1.29	17.8	1.09	19.0	1.00
65.0	18.1	0.77	19.5	0.67	20.7	0.59
60.0	21.0	0.16	22.4	0.10	23.3	0.11
Standard Hook	for 3.4 ton					
Hook Weight	60 kgs					
Parts of Line	1					
Critical Boom Angle	58°					

- * 33m Boom + 14.5m Jib
- Outriggers Intermediately Extended Without Front Jack (360° Full Range)
- Outriggers Fully Extended Without Front Jack (Over Front)

Boom Angle (°)	Offset 5°		Offset 17°		Offset 30°	
	Work Radius (m)	Load (t)	Work Radius (m)	Load (t)	Work Radius (m)	Load (t)
80.0	9.9	2.00	12.5	1.30	15.1	0.90
77.7	12.0	2.00	14.5	1.30	16.9	0.90
76.3	13.2	1.85	15.7	1.24	18.0	0.90
73.0	15.6	1.57	18.2	1.10	20.4	0.84
69.0	18.7	1.14	21.2	0.95	23.3	0.76
68.4	19.1	1.01	21.7	0.76	23.8	0.75
67.8	19.5	0.91	22.0	0.72	24.2	0.57
64.0	22.0	0.42	24.4	0.32	26.4	0.27
62.0	23.4	0.21	25.6	0.16	27.5	0.14
Standard Hook	for 3.4 ton					
Hook Weight	60 kgs					
Parts of Line	1					
Critical Boom Angle	60°					