

MACHINE WEIGHTS AND GROUND PRESSURE

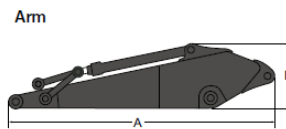
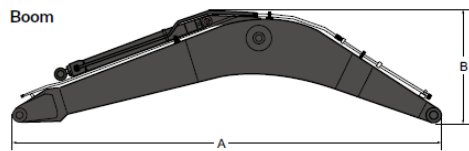
		EC380DL				EC480DL				EC480DL			
Boom	m	6.45				6.45				8.5			
Arm	m	2.6				2.6				5.0			
Bucket	kg	1 752				1 752				1 090			
Counterweight	kg	6 500				7 000				8 500			
		Shoe width mm	Operating weight kg	Ground pressure kPa	Overall width mm	Shoe width mm	Operating weight kg	Ground pressure kPa	Overall width mm	Shoe width mm	Operating weight kg	Ground pressure kPa	Overall width mm
Triple grouser		600	37 840	68.6	3 340	600	38 340	69.5	3 340	600	40 980	74.3	3 340
	HD 600		38 117	69.1	3 340	HD 600	38 617	70.0	3 340	HD 600	41 257	74.8	3 340
		700	38 330	59.8	3 440	700	38 830	60.6	3 440	700	41 470	64.7	3 440
		800	38 760	53.0	3 540	800	39 260	53.7	3 540	800	41 410	56.6	3 540
		900	39 200	48.1	3 640	900	39 700	48.7	3 640	900	41 420	50.8	3 640
Double grouser		600	38 000	69.6	3 340	600	38 500	70.5	3 340	-	-	-	-

		EC380DL				EC480DL				EC480DL			
Boom	m	6.45				6.45				8.5			
Arm	m	2.6				2.6				5.0			
Bucket	kg	1 752				1 752				1 090			
Counterweight	kg	6 500				7 000				8 500			
		Shoe width mm	Operating weight kg	Ground pressure kPa	Overall width mm	Shoe width mm	Operating weight kg	Ground pressure kPa	Overall width mm	Shoe width mm	Operating weight kg	Ground pressure kPa	Overall width mm
Triple grouser		600	47 300	82.4	3 340	600	47 900	83.4	3 340	600	50 510	87.9	3 340
		700	47 800	71.7	3 440	700	48 400	72.6	3 440	700	51 010	76.5	3 440
		800	48 300	62.9	3 540	800	48 900	63.7	3 540	800	51 510	67.1	3 540
		900	48 900	57.2	3 640	900	49 500	57.9	3 640	900	52 110	61.0	3 640
Double grouser		600	47 400	82.4	3 340	600	48 000	83.4	3 340	-	-	-	-

		EC380DL				EC480DL				EC480DL			
Boom	m	6.45				6.45				8.5			
Arm	m	2.6				2.6				5.0			
Bucket	kg	1 752				1 752				1 090			
Counterweight	kg	6 500				7 000				8 500			
		Shoe width mm	Operating weight kg	Ground pressure kPa	Overall width mm	Shoe width mm	Operating weight kg	Ground pressure kPa	Overall width mm	Shoe width mm	Operating weight kg	Ground pressure kPa	Overall width mm
Triple grouser		600	49 000	85.3	3 490	600	49 700	86.5	3 490	600	51 610	89.8	3 340
		700	49 500	73.5	3 590	700	50 200	74.5	3 590	700	52 110	77.4	3 440
		800	50 000	65.7	3 690	800	50 700	66.6	3 690	800	52 610	69.1	3 540
		900	50 500	58.8	3 790	900	51 200	59.6	3 790	900	53 110	61.8	3 640
Double grouser		600	49 100	85.3	3 490	600	49 800	86.5	3 490	-	-	-	-

* FIXED UNDERCARRIAGE ** RETRACTABLE UNDERCARRIAGE

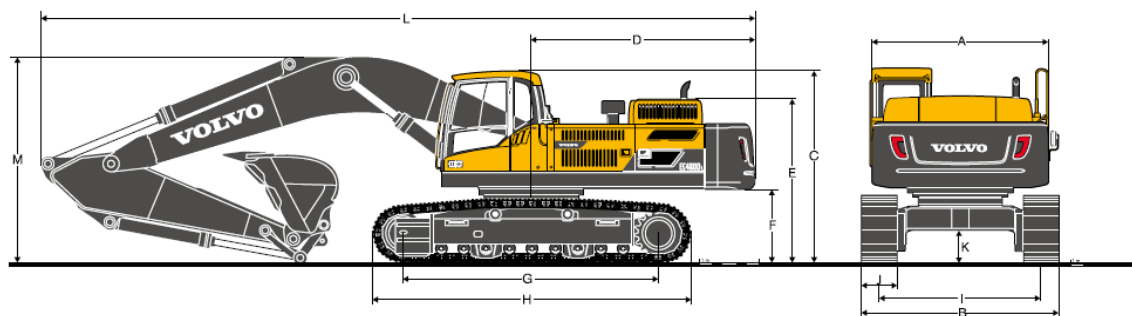
DIMENSIONS



		EC380DL			EC480DL		
				long reach			long reach
Boom	m	6.2	6.45	8.5	6.5	7.0	9.0
A. Length	mm	6460	6700	8750	6750	7250	9270
B. Height	mm	1740	1800	1910	2000	1840	1950
Width	mm	820	820	820	960	960	960
Weight	kg	3530	3550	4856	4300	4380	6080

Includes arm cylinder, piping and pin

		EC380DL				EC480DL					
					long reach						long reach
Arm	m	2.6	3.2	3.9	5.0	2.55	3.0	3.35	3.9	4.8	6.0
A. Length	mm	3780	4360	5080	6180	3770	4260	4590	5140	6100	7200
B. Height	mm	1150	1150	1150	1040	1270	1270	1270	1270	1270	1180
Width	mm	560	560	560	560	600	600	600	600	600	560
Weight	kg	2050	2220	2300	2527	2340	2630	2630	2590	2730	3163

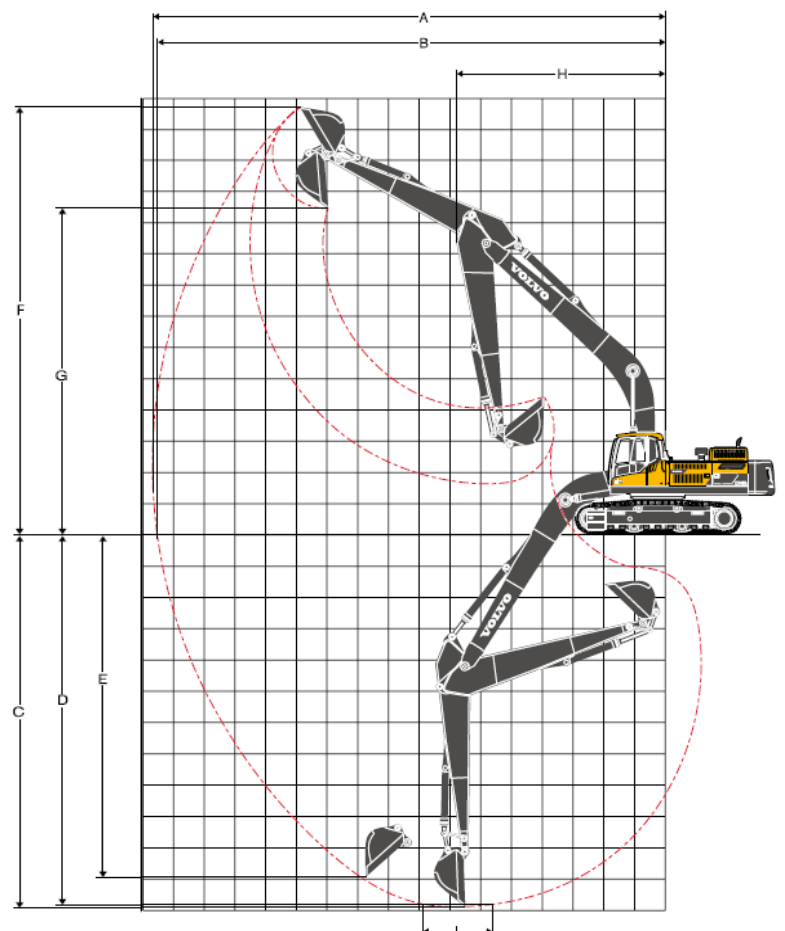
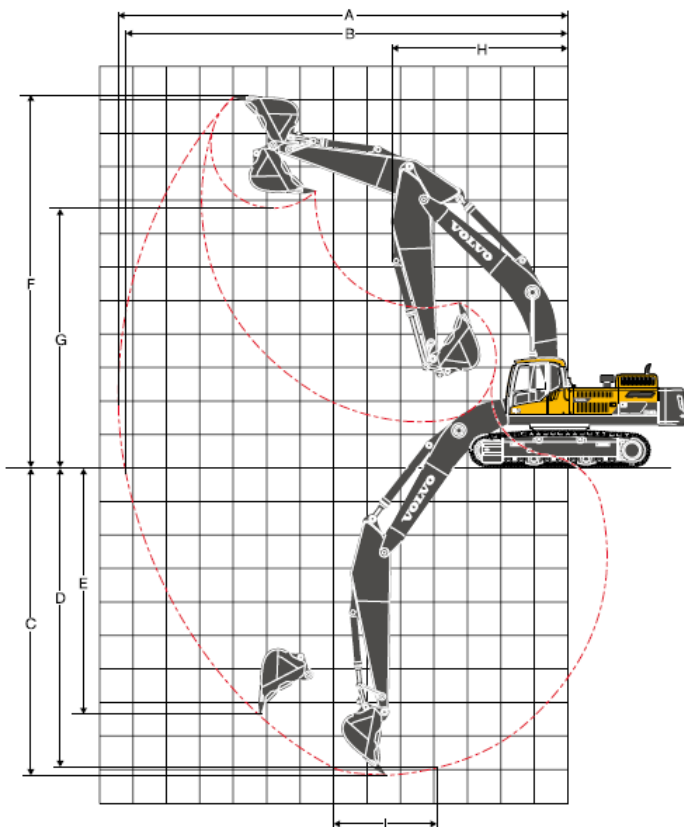


Description		EC380DL						EC480DL*					
Boom	m	6.2	6.45			6.5		7.0					
Arm	m	2.6	2.6	3.2	3.9	2.55	3.0	2.55	3.0	3.35	3.9	4.8	
A. Overall width of upper structure	mm	2 990	2 990	2 990	2 990	2 990	2 990	2 990	2 990	2 990	2 990	2 990	2 990
B. Overall width	mm	3 340	3 340	3 340	3 340	3 440	3 440	3 440	3 440	3 440	3 440	3 440	3 440
C. Overall height of cab	mm	3 197	3 197	3 197	3 197	3 257	3 257	3 257	3 257	3 257	3 257	3 257	3 257
D. Tail slew radius	mm	3 560	3 560	3 560	3 560	3 800	3 800	3 800	3 800	3 800	3 800	3 800	3 800
E. Overall height of engine hood	mm	2 720	2 720	2 720	2 720	2 770	2 770	2 770	2 770	2 770	2 770	2 770	2 770
F†. Counterweight clearance	mm	1 210	1 210	1 210	1 210	1 275	1 275	1 275	1 275	1 275	1 275	1 275	1 275
G. Tumbler length	mm	4 240	4 240	4 240	4 240	4 370	4 370	4 370	4 370	4 370	4 370	4 370	4 370
H. Track length	mm	5 180	5 180	5 180	5 180	5 370	5 370	5 370	5 370	5 370	5 370	5 370	5 370
I. Track gauge	mm	2 740	2 740	2 740	2 740	2 740	2 740	2 740	2 740	2 740	2 740	2 740	2 740
J. Shoe width	mm	600	600	600	600	700	700	700	700	700	700	700	700
K†. Min. ground clearance	mm	500	500	500	500	550	550	550	550	550	550	550	550
L. Overall length	mm	11 080	11 330	11 240	11 290	11 630	11 590	12 130	12 100	12 140	12 140	12 140	12 010
M. Overall height of boom	mm	3 700	3 580	3 350	3 590	3 770	3 810	3 630	3 680	3 650	3 690	4 650	

Description		EC480DL**							EC380DLR	EC480DLR*	EC480DLR**
Boom	m	6.5		7.0					8.5	9.0	9.0
Arm	m	2.55	3.0	2.55	3.0	3.35	3.9	4.8	5.0	6.0	6.0
A. Overall width of upper structure	mm	2 990	2 990	2 990	2 990	2 990	2 990	2 990	2 990	2 990	2 990
B. Overall width	mm	3 590	3 590	3 590	3 590	3 590	3 590	3 590	3 340	3 440	3 590
Overall width (retracted)	mm	3 090	3 090	3 090	3 090	3 090	3 090	3 090	-	-	3 090
C. Overall height of cab	mm	3 370	3 370	3 370	3 370	3 370	3 370	3 370	3 197	3 257	3 370
D. Tail slew radius	mm	3 800	3 800	3 800	3 800	3 800	3 800	3 800	3 560	3 800	3 800
E. Overall height of engine hood	mm	2 880	2 880	2 880	2 880	2 880	2 880	2 880	2 720	2 770	2 880
F†. Counterweight clearance	mm	1 385	1 385	1 385	1 385	1 385	1 385	1 385	1 210	1 275	1 385
G. Tumbler length	mm	4 370	4 370	4 370	4 370	4 370	4 370	4 370	4 240	4 370	4 370
H. Track length	mm	5 370	5 370	5 370	5 370	5 370	5 370	5 370	5 180	5 370	5 370
I. Track gauge	mm	2 390	2 390	2 390	2 390	2 390	2 390	2 390	2 740	2 740	2 390
Track gauge (extended)	mm	2 890	2 890	2 890	2 890	2 890	2 890	2 890	-	-	2 890
J. Shoe width	mm	700	700	700	700	700	700	700	600	700	700
K†. Min. ground clearance	mm	746	746	746	746	746	746	746	500	550	749
L. Overall length	mm	11 630	11 590	12 130	12 100	12 140	12 140	12 010	13 080	13 620	13 620
M. Overall height of boom	mm	3 800	3 810	3 630	3 680	3 650	3 830	4 790	4 480	5 630	5 770

† Without shoe grouser * FIXED UNDERCARRIAGE ** RETRACTABLE UNDERCARRIAGE

WORKING RANGES



Description		EC380DL				EC480DL*						
Boom	m	6.2	6.45			6.5		7.0				
Arm	m	2.6	2.6	3.2	3.9	2.55	3.0	2.55	3.0	3.35	3.9	4.8
A. Max. digging reach	mm	10 430	10 550	11 070	11 720	10 930	11 290	11 340	11 710	12 040	12 530	13 260
B. Max. digging reach on ground	mm	10 210	10 330	10 860	11 520	10 680	11 050	11 110	11 480	11 810	12 320	13 060
C. Max. digging depth	mm	740	6 850	7 450	8 150	6 580	7 030	6 920	7 370	7 720	8 270	9 170
D. Max. digging depth (l. 2.44 m level)	mm	6 550	6 640	7 270	8 000	6 410	6 880	6 750	7 210	7 570	8 140	9 050
E. Max. vertical wall digging depth	mm	4 970	5 350	5 790	6 410	5 990	6 430	6 270	6 670	7 110	7 570	8 020
F. Max. cutting height	mm	10 070	10 170	10 340	10 600	10 600	10 590	10 860	10 860	11 020	11 190	11 130
G. Max. dumping height	mm	6 820	7 090	7 290	7 560	6 970	7 020	7 420	7 480	7 640	7 820	7 850
H. Min. front swing radius	mm	4 120	4 320	4 280	4 310	4 780	4 740	5 170	5 130	5 090	5 050	5 100

Digging forces with direct fit bucket

Bucket radius	mm	1 810	1 623	1 623	1 623	1 923	1 923	1 810	1 810	1 810	1 810	1 810
Breakout force – bucket	Normal SAE J1179 kN	215	198	198	198	253	253	230	230	230	230	230
	Power boost SAE J1179 kN	235	215	215	215	275	275	251	251	251	251	251
	Normal ISO 6015 kN	243	222	222	222	285	285	261	261	261	261	261
	Power boost ISO 6015 kN	265	243	243	243	311	311	284	284	284	284	284
Tearout force – dipper arm	Normal SAE J1179 kN	188	196	162	141	225	205	232	211	196	176	160
	Power boost SAE J1179 kN	206	213	177	154	244	224	252	230	215	192	174
	Normal ISO 6015 kN	194	201	166	144	232	212	239	216	201	179	163
	Power boost ISO 6015 kN	212	219	181	157	253	231	260	235	220	196	178
Rotation angle, bucket	°	164	177	177	177	169	169	183	183	183	183	183

Description		EC480DL**							EC380DLR	EC480DLR*	EC480DLR**
Boom	m	6.5		7.0					8.5	9.0	9.0
Arm	m	2.55	3.0	2.55	3.0	3.35	3.9	4.8	5.0	6.0	6.0
A. Max. digging reach	mm	10 930	11 290	11 340	11 710	12 040	12 530	13 260	14 750	16 460	16 460
B. Max. digging reach on ground	mm	10 660	11 030	11 090	11 460	11 790	12 300	13 040	14 590	16 300	16 280
C. Max. digging depth	mm	6 470	6 920	6 810	7 260	7 610	8 160	9 060	10 980	11 870	11 760
D. Max. digging depth (l. 2.44 m level)	mm	6 300	6 770	6 640	7 100	7 460	8 030	8 940	10 860	11 770	11 660
E. Max. vertical wall digging depth	mm	5 880	6 320	6 160	6 560	7 000	7 460	7 910	10 370	11 240	11 130
F. Max. cutting height	mm	10 710	10 700	10 970	10 970	11 130	11 300	11 240	12 610	13 750	13 860
G. Max. dumping height	mm	7 080	7 130	7 530	7 590	7 750	7 930	7 960	9 610	10 700	10 810
H. Min. front swing radius	mm	4 780	4 740	5 170	5 130	5 090	5 050	5 100	5 730	6 610	6 610

Digging forces with direct fit bucket

Bucket radius	mm	1 923	1 923	1 810	1 810	1 810	1 810	1 810	1 598	1 598	1 598
Breakout force – bucket	Normal SAE J1179 kN	253	253	230	230	230	230	230	148	163	163
	Power boost SAE J1179 kN	275	275	251	251	251	251	251	148	178	178
	Normal ISO 6015 kN	285	285	261	261	261	261	261	166	183	183
	Power boost ISO 6015 kN	311	311	284	284	284	284	284	166	200	200
Tearout force – dipper arm	Normal SAE J1179 kN	225	205	232	211	196	176	160	120	130	130
	Power boost SAE J1179 kN	244	224	252	230	215	192	174	131	142	142
	Normal ISO 6015 kN	232	212	239	216	201	179	163	122	132	132
	Power boost ISO 6015 kN	253	231	260	235	220	196	178	133	144	144
Rotation angle, bucket	°	169	169	183	183	183	183	183	177	177	177

* FIXED UNDERCARRIAGE, Machine with pin-on bucket

** RETRACTABLE UNDERCARRIAGE, Machine with pin-on bucket

Bucket spec. for Working Range

EC380D

- For ME Boom : VGP50 2 300 L VTS (Bucket tip radius : 1 826.34 mm)

- For STD Boom : KGP36 1 610 L KTS (Bucket tip radius : 1 697.23 mm)

- For LR Boom : KGP29 1 400 L KTS (Bucket tip radius : 1 598.3 mm)

EC480D

- For ME Boom : VGP60 2 600 L VTS (Bucket tip radius : 1 948.40 mm)

- For STD Boom : KGP46 2 060 L KTS (Bucket tip radius : 1 847.01 mm)

- For LR Boom : KGP29 1 600 L KTS (Bucket tip radius : 1 598.3 mm)

EXPLANATION OF LIFTING CAPACITY TABLES

Example: EC380DL

Lifting capacity at the arm end without bucket.

For lifting capacity including bucket, simply subtract actual weight of the direct fit bucket or the bucket with quick coupler from the following values.

	Lifting hook related to ground level		1.5 m		3.0 m		4.5 m		6.0 m		7.5 m		9.0 m		Max. reach		mm
			Along UC	Across UC	Along UC	Across UC	Along UC	Across UC	Along UC	Across UC	Along UC	Across UC	Along UC	Across UC	Along UC	Across UC	
Boom: 6.2 m	7.5 m	kg	-	-	-	-	-	-	*10 730	9 890	-	-	-	-	*10 940	8 140	6 717
	6.0 m	kg	-	-	-	-	-	-	*11 270	9 690	*10 800	6 730	-	-	10 530	6 430	7 694
	4.5 m	kg	-	-	-	-	*15 950	14 330	*12 740	9 270	10 850	6 580	-	-	9 200	5 580	8 288
Arm: 2.6 m	3.0 m	kg	-	-	-	-	*19 950	13 190	*14 580	8 780	10 590	6 340	-	-	8 570	5 160	8 579
	1.5 m	kg	-	-	-	-	*22 520	12 470	14 570	8 370	10 340	6 130	-	-	8 420	5 030	8 600
Shoe: 600mm	0 m	kg	-	-	-	-	*23 070	12 230	14 290	8 130	10 180	5 990	-	-	8 720	5 170	8 351
CWT: 7050 kg	-1.5 m	kg	-	-	*17 930	*17 930	*22 250	12 240	14 220	8 080	10 170	5 970	-	-	9 610	5 680	7 807
	-3.0 m	kg	-	-	*26 840	24 630	*20 070	12 440	14 370	8 200	-	-	-	-	11 660	6 830	6 898
	-4.5 m	kg	-	-	-	-	*15 500	12 900	-	-	-	-	-	-	*12 300	9 850	5 439

Notes: 1. Machine in "Fine Mode-F" (Power Boost) for lifting capacities.

2. The above loads are in compliance with SAE J1097 and ISO 10567 Hydraulic Excavator Lifting Capacity Standards.

3. Rated loads do not exceed 87% of hydraulic lifting capacity or 75% of tipping load.

4. Rated loads marked with an asterisk (*) are limited by hydraulic capacity rather than tipping load.

LIFTING CAPACITY EC380DL

			1.5 m		3.0 m		4.5 m		6.0 m		7.5 m		9.0 m		Max. reach		mm
			Along UC	Across UC	Along UC	Across UC	Along UC	Across UC	Along UC	Across UC	Along UC	Across UC	Along UC	Across UC	Along UC	Across UC	
Boom: 6.2 m	7.5 m	kg	-	-	-	-	-	-	*10 730	*10 730	-	-	-	-	*10 940	9 120	6 717
	6.0 m	kg	-	-	-	-	-	-	*11 270	10 890	*10 800	7 540	-	-	*10 620	7 210	7 694
	4.5 m	kg	-	-	-	-	*15 950	*15 950	*12 740	10 460	*11 260	7 380	-	-	9 740	6 260	8 288
Arm: 2.6 m	3.0 m	kg	-	-	-	-	*19 950	15 200	*14 580	9 940	11 230	7 150	-	-	9 080	5 810	8 579
	1.5 m	kg	-	-	-	-	*22 520	14 440	15 580	9 520	10 980	6 920	-	-	8 920	5 670	8 600
Shoe: 600mm	0 m	kg	-	-	-	-	*23 070	14 180	15 290	9 270	10 820	6 780	-	-	9 240	5 850	8 351
CWT: 6500 kg	-1.5 m	kg	-	-	*17 930	*17 930	*22 250	14 190	15 220	9 210	10 810	6 760	-	-	10 210	6 420	7 807
	-3.0 m	kg	-	-	*26 840	*26 840	*20 070	14 400	*15 200	9 340	-	-	-	-	12 420	7 740	6 898
	-4.5 m	kg	-	-	-	-	*15 500	14 890	-	-	-	-	-	-	*12 300	11 230	5 439
Boom: 6.45 m	7.5 m	kg	-	-	-	-	-	-	-	-	-	-	-	-	*10 440	8 450	7 031
	6.0 m	kg	-	-	-	-	-	-	*11 010	10 840	*10 360	7 530	-	-	*10 380	6 780	7 969
	4.5 m	kg	-	-	-	-	*16 120	*16 120	*12 600	10 360	*10 980	7 340	-	-	9 240	5 930	8 543
Arm: 2.6 m	3.0 m	kg	-	-	-	-	-	-	*14 480	9 820	11 160	7 080	-	-	8 640	5 510	8 826
	1.5 m	kg	-	-	-	-	-	-	15 430	9 380	10 900	6 840	-	-	8 490	5 380	8 846
Shoe: 600mm	0 m	kg	-	-	-	-	*22 070	14 000	15 150	9 150	10 730	6 690	-	-	8 770	5 530	8 605
CWT: 6500 kg	-1.5 m	kg	-	-	*14 980	*14 980	*22 050	14 030	15 080	9 090	10 690	6 660	-	-	9 620	6 040	8 079
	-3.0 m	kg	-	-	*26 560	*26 560	*20 090	14 240	15 220	9 210	-	-	-	-	11 520	7 180	7 204
	-4.5 m	kg	-	-	*21 140	*21 140	*16 190	14 680	-	-	-	-	-	-	*12 080	10 010	5 824
Boom: 6.45 m	7.5 m	kg	-	-	-	-	-	-	-	-	*8 870	7 760	-	-	*7 750	7 470	7 663
	6.0 m	kg	-	-	-	-	-	-	-	-	*9 530	7 690	-	-	*7 540	6 160	8 531
	4.5 m	kg	-	-	-	-	*14 390	*14 390	*11 650	10 580	*10 300	7 460	*8 320	5 530	*7 610	5 460	9 069
Arm: 3.2 m	3.0 m	kg	-	-	-	-	*18 570	15 340	*13 650	10 000	11 270	7 170	8 450	5 410	*7 930	5 090	9 336
	1.5 m	kg	-	-	-	-	*21 640	14 410	*15 430	9 500	10 960	6 900	8 300	5 270	7 820	4 970	9 355
Shoe: 600mm	0 m	kg	-	-	-	-	*22 810	14 010	15 200	9 180	10 740	6 700	8 200	5 180	8 030	5 080	9 127
CWT: 6500 kg	-1.5 m	kg	-	-	*15 470	*15 470	*22 570	13 940	15 050	9 050	10 650	6 620	-	-	8 690	5 470	8 633
	-3.0 m	kg	*18 020	*18 020	*24 440	*24 440	*21 150	14 070	15 100	9 100	10 720	6 680	-	-	10 100	6 330	7 822
	-4.5 m	kg	-	-	*24 570	*24 570	*18 150	14 410	*13 600	9 350	-	-	-	-	*11 920	8 260	6 575

SPECIFICATIONS

VOLVO CRAWLER EXCAVATOR

		1.5 m		3.0 m		4.5 m		6.0 m		7.5 m		9.0 m		Max. reach		
		Along UC	Across UC	Along UC	Across UC	Along UC	Across UC	Along UC	Across UC	Along UC	Across UC	Along UC	Across UC	Along UC	Across UC	mm
Boom: 6.45 m Arm: 3.9 m Shoe: 600mm CWT: 6500kg	9.0 m	kg	-	-	-	-	-	-	-	-	-	-	-	*6 700	*6 700	7 256
	7.5 m	kg	-	-	-	-	-	-	-	*8 250	8 060	-	-	*6 260	*6 260	8 443
	6.0 m	kg	-	-	-	-	-	-	-	*8 610	7 920	*7 460	5 790	*6 110	5 510	9 237
	4.5 m	kg	-	-	-	-	-	*10 470	*10 470	*9 470	7 650	8 750	5 680	*6 160	4 940	9 736
	3.0 m	kg	-	-	-	*16 500	15 830	*12 550	10 220	*10 610	7 300	8 560	5 500	*6 390	4 630	9 984
	1.5 m	kg	-	-	-	*20 140	14 600	*14 540	9 610	11 050	6 970	8 360	5 320	*6 800	4 520	10 002
	0 m	kg	-	-	*9 650	*9 650	*22 140	13 940	15 210	9 180	10 760	6 700	8 200	5 170	7 260	9 789
	-1.5 m	kg	*9 850	*9 850	*14 680	*14 680	*22 620	13 700	14 950	8 950	10 590	6 560	8 130	5 110	7 730	9 331
	-3.0 m	kg	*15 310	*15 310	*21 180	*21 180	*21 860	13 740	14 910	8 920	10 580	6 540	-	-	8 740	8 587
	-4.5 m	kg	*21 850	*21 850	*27 640	*27 640	*19 720	14 010	*14 890	9 090	-	-	-	-	10 850	7 471
	-6.0 m	kg	-	-	*20 930	*20 930	*15 250	14 580	-	-	-	-	-	-	*11 390	5 767
	7.5 m	kg	-	-	-	-	-	*10 730	*10 730	-	-	-	-	*10 940	9 450	6 717
Boom: 6.2 m Arm: 2.6 m Shoe: 600mm CWT: 7000kg	6.0 m	kg	-	-	-	-	-	*11 270	*11 270	*10 800	7 820	-	-	*10 620	7 480	7 694
	4.5 m	kg	-	-	-	*15 950	*15 950	*12 740	10 840	*11 260	7 670	-	-	-	10 060	8 288
	3.0 m	kg	-	-	-	*19 950	15 770	*14 580	10 320	11 600	7 430	-	-	-	9 380	8 579
	1.5 m	kg	-	-	-	*22 520	15 010	16 080	9 900	11 350	7 210	-	-	-	9 220	8 600
	0 m	kg	-	-	-	*23 070	14 750	15 800	9 650	11 190	7 060	-	-	-	9 560	8 351
	-1.5 m	kg	-	-	*17 930	*17 930	*22 250	14 760	15 720	9 590	11 170	7 050	-	-	10 550	7 807
	-3.0 m	kg	-	-	*26 840	*26 840	*20 070	14 970	*15 200	9 720	-	-	-	-	*12 570	6 898
	-4.5 m	kg	-	-	-	-	*15 500	15 450	-	-	-	-	-	-	*12 300	5 439
	7.5 m	kg	-	-	-	-	-	-	-	-	-	-	-	-	*10 440	7 031
	6.0 m	kg	-	-	-	-	-	*11 010	*11 010	*10 360	7 820	-	-	-	*10 380	7 969
	4.5 m	kg	-	-	-	*16 120	*16 120	*12 600	10 740	*10 980	7 620	-	-	-	9 540	8 543
	3.0 m	kg	-	-	-	-	-	*14 480	10 200	11 520	7 360	-	-	-	8 930	8 826
Boom: 6.45 m Arm: 2.6 m Shoe: 600mm CWT: 7000kg	1.5 m	kg	-	-	-	-	-	15 930	9 760	11 260	7 130	-	-	-	8 780	8 846
	0 m	kg	-	-	-	*22 070	14 570	15 650	9 530	11 090	6 980	-	-	-	9 070	8 605
	-1.5 m	kg	-	-	*14 980	*14 980	*22 050	14 600	15 590	9 470	11 060	6 950	-	-	9 950	8 079
	-3.0 m	kg	-	-	*26 560	*26 560	*20 090	14 810	*15 360	9 590	-	-	-	-	11 900	7 204
	-4.5 m	kg	-	-	*21 140	*21 140	*16 190	15 250	-	-	-	-	-	-	*12 080	5 824
	7.5 m	kg	-	-	-	-	-	-	-	*8 870	8 050	-	-	-	*7 750	7 663
	6.0 m	kg	-	-	-	-	-	-	-	*9 530	7 980	-	-	-	*7 540	8 531
	4.5 m	kg	-	-	-	*14 390	*14 390	*11 650	10 960	*10 300	7 750	*8 320	5 760	*7 610	5 680	9 069
	3.0 m	kg	-	-	-	*18 570	15 910	*13 650	10 380	*11 340	7 460	8 730	5 630	*7 930	5 310	9 336
	1.5 m	kg	-	-	-	*21 640	14 970	*15 430	9 880	11 330	7 180	8 580	5 500	8 090	5 190	9 355
	0 m	kg	-	-	-	*22 810	14 580	15 700	9 560	11 110	6 990	8 480	5 410	8 310	5 300	9 127
	-1.5 m	kg	-	-	*15 470	*15 470	*22 570	14 510	15 550	9 430	11 010	6 900	-	-	8 990	8 633
	-3.0 m	kg	*18 020	*18 020	*24 440	*24 440	*21 150	14 640	15 610	9 480	11 080	6 960	-	-	10 440	7 822
	-4.5 m	kg	-	-	*24 570	*24 570	*18 150	14 980	*13 600	9 730	-	-	-	-	*11 920	6 575
Boom: 6.45 m Arm: 3.9 m Shoe: 600mm CWT: 7000kg	9.0 m	kg	-	-	-	-	-	-	-	-	-	-	-	*6 700	*6 700	7 256
	7.5 m	kg	-	-	-	-	-	-	-	*8 250	*8 250	-	-	-	*6 260	8 443
	6.0 m	kg	-	-	-	-	-	-	-	*8 610	8 210	*7 460	6 010	*6 110	5 730	9 237
	4.5 m	kg	-	-	-	-	-	*10 470	*10 470	*9 470	7 930	*8 950	5 900	*6 160	5 150	9 736
	3.0 m	kg	-	-	-	*16 500	16 400	*12 550	10 600	*10 610	7 590	8 840	5 730	*6 390	4 840	9 984
	1.5 m	kg	-	-	-	*20 140	15 170	*14 540	9 990	11 420	7 250	8 650	5 550	*6 800	4 720	10 002
	0 m	kg	-	-	*9 650	*9 650	*22 140	14 510	15 710	9 560	11 130	6 990	8 490	5 400	*7 480	9 789
	-1.5 m	kg	*9 850	*9 850	*14 680	*14 680	*22 620	14 270	15 450	9 330	10 960	6 840	8 420	5 340	8 000	9 331
	-3.0 m	kg	*15 310	*15 310	*21 180	*21 180	*21 860	14 310	15 420	9 300	10 940	6 830	-	-	9 040	8 587
	-4.5 m	kg	*21 850	*21 850	*27 640	*27 640	*19 720	14 580	*14 890	9 470	-	-	-	-	11 210	7 471
	-6.0 m	kg	-	-	*20 930	*20 930	*15 250	15 150	-	-	-	-	-	-	*11 390	5 767

LIFTING CAPACITY EC480DL, FIXED UNDERCARRIAGE

			3.0 m		4.5 m		6.0 m		7.5 m		9.0 m		10.5 m		Max. reach		
			Along UC	Across UC	Along UC	Across UC	Along UC	Across UC	Along UC	Across UC	Along UC	Across UC	Along UC	Across UC	Along UC	Across UC	mm
Boom: 6.5 m Arm: 2.55 m Shoe: 600mm CWT: 9050kg	7.5 m	kg	-	-	-	-	-	-	-	-	-	-	-	-	*12 430	10 810	7 249
	6.0 m	kg	-	-	-	-	*13 390	*13 390	*12 350	10 180	-	-	-	-	*12 280	8 880	8 143
	4.5 m	kg	-	-	*19 980	*19 980	*15 270	13 820	*13 110	9 920	-	-	-	-	12 330	7 900	8 686
	3.0 m	kg	-	-	*24 400	19 800	*17 390	13 170	*14 160	9 600	-	-	-	-	11 630	7 420	8 944
	1.5 m	kg	-	-	*17 490	*17 490	*19 000	12 680	14 930	9 330	-	-	-	-	11 510	7 310	8 942
	0 m	kg	-	-	*25 680	18 950	*19 670	12 440	14 750	9 160	-	-	-	-	11 940	7 550	8 680
	-1.5 m	kg	*18 840	*18 840	*25 280	19 030	*19 250	12 400	14 730	9 150	-	-	-	-	13 140	8 260	8 132
	-3.0 m	kg	*29 180	*29 180	*22 630	19 300	*17 440	12 560	-	-	-	-	-	-	*13 600	9 810	7 231
	-4.5 m	kg	-	-	*17 530	*17 530	-	-	-	-	-	-	-	-	*12 950	*12 950	5 813
	-7.5 m	kg	-	-	-	-	-	-	*11 300	10 270	-	-	-	-	*10 910	9 820	7 692
Boom: 6.5 m Arm: 3.0 m Shoe: 600mm CWT: 9050kg	6.0 m	kg	-	-	-	-	-	-	*11 480	10 160	-	-	-	-	*10 590	8 180	8 539
	4.5 m	kg	-	-	*18 230	*18 230	*14 280	13 830	*12 360	9 860	*11 470	7 390	-	-	*10 670	7 310	9 058
	3.0 m	kg	-	-	*22 890	19 900	*16 480	13 110	*13 500	9 500	11 420	7 240	-	-	10 840	6 870	9 305
	1.5 m	kg	-	-	*25 180	18 920	*18 300	12 540	*14 530	9 180	11 250	7 080	-	-	10 710	6 750	9 303
	0 m	kg	-	-	*26 410	18 600	*19 260	12 210	14 550	8 960	11 150	6 990	-	-	11 060	6 940	9 052
	-1.5 m	kg	*19 530	*19 530	*25 590	18 600	*19 190	12 110	14 480	8 900	-	-	-	-	12 050	7 520	8 528
	-3.0 m	kg	*31 560	*31 560	*23 430	18 830	*17 880	12 220	*13 630	9 030	-	-	-	-	*13 100	8 780	7 675
	-4.5 m	kg	-	-	*19 220	*19 220	*14 290	12 620	-	-	-	-	-	-	*13 000	11 680	6 359
	-7.5 m	kg	-	-	-	-	-	-	-	-	-	-	-	-	-	-	-
	-9.0 m	kg	-	-	-	-	-	-	-	-	-	-	-	-	*11 860	*11 860	6 619
Boom: 7.0 m Arm: 2.55 m Shoe: 600mm CWT: 9050kg	7.5 m	kg	-	-	-	-	-	-	*11 320	10 280	-	-	-	-	*11 440	9 430	7 886
	6.0 m	kg	-	-	-	-	*13 060	*13 060	*11 700	10 110	-	-	-	-	*11 360	7 940	8 714
	4.5 m	kg	-	-	-	-	*15 150	13 550	*12 670	9 790	*11 500	7 430	-	-	11 150	7 140	9 223
	3.0 m	kg	-	-	-	-	*17 330	12 860	*13 820	9 440	11 430	7 270	-	-	10 580	6 740	9 466
	1.5 m	kg	-	-	-	-	*18 870	12 390	14 740	9 150	11 270	7 120	-	-	10 480	6 640	9 464
	0 m	kg	-	-	-	-	*19 450	12 180	14 540	8 980	11 180	7 050	-	-	10 820	6 840	9 217
	-1.5 m	kg	-	-	*24 720	18 780	*19 090	12 170	14 510	8 950	-	-	-	-	11 760	7 400	8 703
	-3.0 m	kg	*27 580	*27 580	*22 570	19 020	*17 700	12 310	*13 770	9 100	-	-	-	-	*12 720	8 580	7 870
	-4.5 m	kg	-	-	*18 710	*18 710	*14 430	12 700	-	-	-	-	-	-	*12 460	11 220	6 594
	-7.5 m	kg	-	-	-	-	-	-	-	-	-	-	-	-	*10 770	*10 770	7 134
Boom: 7.0 m Arm: 3.0 m Shoe: 600mm CWT: 9050kg	7.5 m	kg	-	-	-	-	-	-	*10 380	10 300	-	-	-	-	*10 510	8 610	8 322
	6.0 m	kg	-	-	-	-	-	-	*10 910	10 080	*10 490	7 480	-	-	*10 500	7 320	9 109
	4.5 m	kg	-	-	*18 910	*18 910	*14 150	13 550	*11 950	9 720	*10 830	7 340	-	-	10 390	6 610	9 597
	3.0 m	kg	-	-	-	-	*16 420	12 790	*13 170	9 330	11 320	7 140	-	-	9 870	6 240	9 831
	1.5 m	kg	-	-	-	-	*18 170	12 230	*14 240	8 990	11 110	6 960	-	-	9 760	6 130	9 829
	0 m	kg	-	-	*18 120	*18 120	*19 030	11 930	14 340	8 770	10 980	6 840	-	-	10 040	6 280	9 591
	-1.5 m	kg	*13 850	*13 850	*25 110	18 290	*18 980	11 860	14 250	8 700	10 980	6 840	-	-	10 820	6 750	9 099
	-3.0 m	kg	*25 800	*25 800	*23 270	18 520	*17 960	11 970	*14 100	8 790	-	-	-	-	*12 180	7 720	8 306
	-4.5 m	kg	*25 880	*25 880	*19 960	18 960	*15 450	12 280	-	-	-	-	-	-	*12 260	9 780	7 111
	-6.0 m	kg	-	-	-	-	-	-	*10 300	*10 300	-	-	-	-	*10 360	10 330	7 583
Boom: 7.0 m Arm: 3.35 m Shoe: 600mm CWT: 9050kg	9.0 m	kg	-	-	-	-	-	-	*10 010	*10 010	-	-	-	-	*9 800	8 200	8 709
	7.5 m	kg	-	-	-	-	-	-	*10 630	10 330	*10 190	7 720	-	-	*9 600	7 080	9 463
	6.0 m	kg	-	-	*17 950	*17 950	*13 760	*11 740	9 980	*10 670	7 560	-	-	-	*9 680	6 450	9 933
	4.5 m	kg	-	-	*22 870	19 800	*16 130	13 150	*13 040	9 580	*11 350	7 350	-	-	9 570	6 110	10 159
	3.0 m	kg	-	-	*15 840	*15 840	*18 080	12 560	*14 210	9 230	11 310	7 160	-	-	9 460	6 010	10 158
	1.5 m	kg	-	-	*19 420	18 570	*19 170	12 220	14 570	9 000	11 160	7 020	-	-	9 710	6 140	9 928
	0 m	kg	*14 040	*14 040	*25 880	18 570	*19 340	12 100	14 450	8 890	11 110	6 970	-	-	10 390	6 550	9 454
	-1.5 m	kg	*23 900	*23 900	*24 290	18 740	*18 570	12 150	14 490	8 930	-	-	-	-	11 760	7 390	8 694
	-3.0 m	kg	*28 410	*28 410	*21 330	19 100	*16 470	12 390	*12 380	9 180	-	-	-	-	*12 190	9 090	7 562
	-4.5 m	kg	-	-	-	-	-	-	-	-	-	-	-	-	*8 370	*8 370	8 244

			3.0 m		4.5 m		6.0 m		7.5 m		9.0 m		10.5 m		Max. reach		
			Along UC	Across UC	Along UC	Across UC	Along UC	Across UC	Along UC	Across UC	Along UC	Across UC	Along UC	Across UC	Along UC	Across UC	mm
Boom: 7.0 m Arm: 3.9 m Shoe: 600mm CWT: 9050kg	9.0 m	kg	-	-	-	-	-	-	-	-	*9250	7850	-	-	*7930	7410	9288
	7.5 m	kg	-	-	-	-	-	-	*9780	*9780	*9410	7760	-	-	*7770	6470	9999
	6.0 m	kg	-	-	-	-	*12 610	*12 610	*10 930	10 020	*9990	7560	-	-	*7840	5910	10 444
	4.5 m	kg	-	-	*20 840	20 140	*15 060	13 240	*12 300	9 580	*10 760	7 320	9 060	5 760	*8090	5 620	10 659
	3.0 m	kg	-	-	*21 560	18 890	*17 210	12 540	*13 600	9 180	11 250	7 080	8 930	5 640	*8570	5 520	10 657
	1.5 m	kg	-	-	*21 410	18 360	*18 610	12 100	14 470	8 890	11 050	6 910	-	-	8 930	5 610	10 439
	0 m	kg	*14 060	*14 060	*25 990	18 230	*19 130	11 900	14 290	8 730	10 950	6 810	-	-	9 470	5 940	9 989
	-1.5 m	kg	*21 670	*21 670	*24 880	18 330	*18 740	11 890	14 270	8 710	10 990	6 850	-	-	10 560	6 600	9 275
	-3.0 m	kg	*31 060	*31 060	*22 520	18 640	*17 220	12 070	*13 380	8 870	-	-	-	-	*11 590	7 900	8 224
	-4.5 m	kg	-	-	*18 130	*18 130	*13 640	12 510	-	-	-	-	-	-	*11 580	10 840	6 678
Boom: 7.0 m Arm: 4.8 m Shoe: 600mm CWT: 9050kg	9.0 m	kg	-	-	-	-	-	-	-	-	*8 030	8 000	-	-	*7 580	*7 580	9 163
	7.5 m	kg	-	-	-	-	-	-	-	-	*7 860	*7 860	-	-	*7 290	6 470	10 111
	6.0 m	kg	-	-	-	-	-	-	-	-	*8 220	7 860	*8 250	6 000	*7 220	5 720	10 766
	4.5 m	kg	-	-	-	-	-	-	*9 570	*9 570	*8 910	7 610	*8 550	5 880	*7 320	5 250	11 181
	3.0 m	kg	-	-	*17 570	*17 570	*13 220	13 220	*11 040	9 670	*9 780	7 320	*9 020	5 720	*7 570	4 990	11 382
	1.5 m	kg	-	-	*21 990	19 240	15 670	12 650	*12 510	9 180	*10 680	7 030	8 860	5 550	7 820	4 880	11 380
	0 m	kg	-	-	*24 650	18 270	17 530	12 030	*13 720	8 790	10 940	6 780	8 710	5 410	7 940	4 930	11 176
	-1.5 m	kg	*14 230	*14 230	*25 660	17 870	18 570	11 680	14 110	8 540	10 760	6 620	8 620	5 340	8 340	5 160	10 758
	-3.0 m	kg	*19 870	*19 870	*25 380	17 810	18 750	11 560	13 990	8 440	10 700	6 570	-	-	9 120	5 640	10 098
	-4.5 m	kg	*27 230	*27 230	*23 910	18 000	17 970	11 630	14 050	8 490	10 810	6 660	-	-	10 580	6 530	9 145
	-6.0 m	kg	*29 270	*29 270	*20 870	18 440	15 820	11 910	*12 010	8 750	-	-	-	-	*11 290	8 340	7 787

LIFTING CAPACITY EC480DL, RETRACTABLE UNDERCARRIAGE

			3.0 m		4.5 m		6.0 m		7.5 m		9.0 m		10.5 m		Max. reach		
			Along UC	Across UC	Along UC	Across UC	Along UC	Across UC	Along UC	Across UC	Along UC	Across UC	Along UC	Across UC	Along UC	Across UC	mm
Boom: 6.5 m Arm: 2.55 m Shoe: 600mm CWT: 9750kg	7.5 m	kg	-	-	-	-	-	-	-	-	-	-	-	-	*12 430	11 970	7 249
	6.0 m	kg	-	-	-	-	*13 390	*13 390	*12 350	11 280	-	-	-	-	*12 280	9 870	8 143
	4.5 m	kg	-	-	*19 980	*19 980	*15 270	*15 270	*13 110	11 020	-	-	-	-	*12 350	8 800	8 686
	3.0 m	kg	-	-	*24 400	22 270	*17 390	14 700	*14 160	10 700	-	-	-	-	12 230	8 280	8 944
	1.5 m	kg	-	-	*17 490	*17 490	*19 000	14 210	*15 060	10 420	-	-	-	-	12 110	8 170	8 942
	0 m	kg	-	-	*25 680	21 410	*19 670	13 950	*15 490	10 260	-	-	-	-	12 570	8 440	8 680
	-1.5 m	kg	*18 840	*18 840	*25 280	21 490	*19 250	13 910	*15 070	10 240	-	-	-	-	*13 470	9 230	8 132
	-3.0 m	kg	*29 180	*29 180	*22 630	21 770	*17 440	14 080	-	-	-	-	-	-	*13 600	10 960	7 231
	-4.5 m	kg	-	-	*17 530	*17 530	-	-	-	-	-	-	-	-	*12 950	*12 950	5 813
	7.5 m	kg	-	-	-	-	-	-	*11 300	*11 300	-	-	-	-	*10 910	10 890	7 692
Boom: 7.0 m Arm: 4.8 m Shoe: 600mm CWT: 9050kg	6.0 m	kg	-	-	-	-	-	-	*11 480	11 270	-	-	-	-	*10 590	9 110	8 539
	4.5 m	kg	-	-	*18 230	*18 230	*14 280	*14 280	*12 360	10 970	*11 470	8 250	-	-	*10 680	8 160	9 058
	3.0 m	kg	-	-	*22 890	22 390	*16 480	14 650	*13 500	10 600	*11 900	8 090	-	-	*11 100	7 690	9 305
	1.5 m	kg	-	-	*25 180	21 380	*18 300	14 060	*14 530	10 270	11 850	7 940	-	-	11 280	7 570	9 303
	0 m	kg	-	-	*26 410	21 050	*19 260	13 730	*15 150	10 060	11 750	7 850	-	-	11 650	7 790	9 052
	-1.5 m	kg	*19 530	*19 530	*25 590	21 060	*19 190	13 630	*15 050	9 990	-	-	-	-	12 690	8 440	8 528
	-3.0 m	kg	*31 560	*31 560	*23 430	21 290	*17 880	13 740	*13 630	10 130	-	-	-	-	*13 100	9 840	7 675
	-4.5 m	kg	-	-	*19 220	*19 220	*14 300	14 140	-	-	-	-	-	-	*13 000	*13 000	6 359

SPECIFICATIONS

VOLVO CRAWLER EXCAVATOR

			3.0 m		4.5 m		6.0 m		7.5 m		9.0 m		10.5 m		Max. reach		
			Along UC	Across UC	Along UC	Across UC	Along UC	Across UC	Along UC	Across UC	Along UC	Across UC	Along UC	Across UC	Along UC	Across UC	mm
Boom: 7.0 m Arm: 2.55 m Shoe: 600mm CWT: 9750kg	9.0 m	kg	-	-	-	-	-	-	-	-	-	-	-	-	*11860	*11860	6 619
	7.5 m	kg	-	-	-	-	-	-	*11320	*11320	-	-	-	-	*11440	10 460	7 886
	6.0 m	kg	-	-	-	-	*13 060	*13 060	*11700	11 220	-	-	-	-	*11360	8 830	8 714
	4.5 m	kg	-	-	-	-	*15 150	15 080	*12 670	10 890	*11 500	8 290	-	-	*11450	7 970	9 223
	3.0 m	kg	-	-	-	-	*17 330	14 390	*13 820	10 540	*11 980	8 130	-	-	11 140	7 540	9 466
	1.5 m	kg	-	-	-	-	*18 870	13 910	*14 770	10 240	11 870	7 980	-	-	11 040	7 440	9 464
	0 m	kg	-	-	-	-	*19 450	13 700	*15 270	10 070	11 780	7 900	-	-	11 400	7 660	9 217
	-1.5 m	kg	-	-	*24 720	21 230	*19 090	13 680	*15 100	10 040	-	-	-	-	12 390	8 290	8 703
	-3.0 m	kg	*27 580	*27 580	*22 570	21 480	*17 710	13 830	*13 780	10 190	-	-	-	-	*12 720	9 600	7 870
	-4.5 m	kg	-	-	*18 710	*18 710	*14 440	14 220	-	-	-	-	-	-	*12 460	*12 460	6 594
Boom: 7.0 m Arm: 3.00 m Shoe: 600mm CWT: 9750kg	9.0 m	kg	-	-	-	-	-	-	-	-	-	-	-	-	*10 770	*10 770	7 134
	7.5 m	kg	-	-	-	-	-	-	*10 380	*10 380	-	-	-	-	*10 510	9 570	8 322
	6.0 m	kg	-	-	-	-	-	-	*10 910	*10 910	*10 490	8 340	-	-	*10 500	8 170	9 109
	4.5 m	kg	-	-	*18 910	*18 910	*14 150	*14 150	*11 950	10 830	*10 830	8 200	-	-	*10 630	7 390	9 597
	3.0 m	kg	-	-	-	-	*16 420	14 320	*13 170	10 420	*11 420	8 000	-	-	10 400	7 000	9 831
	1.5 m	kg	-	-	-	-	*18 170	13 740	*14 240	10 080	11 710	7 810	-	-	10 290	6 890	9 829
	0 m	kg	-	-	*18 120	*18 120	*19 030	13 440	*14 900	9 860	11 580	7 690	-	-	10 590	7 070	9 591
	-1.5 m	kg	*13 850	*13 850	*25 110	20 740	*18 980	13 370	*14 950	9 790	11 580	7 690	-	-	11 410	7 590	9 099
	-3.0 m	kg	*25 800	*25 800	*23 270	20 970	*17 960	13 480	*14 100	9 880	-	-	-	-	*12 180	8 670	8 306
	-4.5 m	kg	*25 880	*25 880	*19 960	*19 960	*15 450	13 800	-	-	-	-	-	-	*12 260	10 960	7 111
Boom: 7.0 m Arm: 3.35 m Shoe: 600mm CWT: 9750kg	9.0 m	kg	-	-	-	-	-	-	*10 300	*10 300	-	-	-	-	*10 360	*10 360	7 583
	7.5 m	kg	-	-	-	-	-	-	*10 010	*10 010	-	-	-	-	*9 800	9 100	8 709
	6.0 m	kg	-	-	-	-	-	-	*10 630	*10 630	*10 190	8 580	-	-	*9 600	7 880	9 463
	4.5 m	kg	-	-	*17 950	*17 950	*13 760	*13 760	*11 740	11 080	*10 670	8 420	-	-	*9 680	7 200	9 933
	3.0 m	kg	-	-	*22 870	22 280	*16 130	14 680	*13 040	10 680	*11 350	8 210	-	-	*10 010	6 840	10 159
	1.5 m	kg	-	-	*15 840	*15 840	*18 080	14 080	*14 210	10 330	11 910	8 010	-	-	9 970	6 740	10 158
	0 m	kg	-	-	*19 420	*19 420	*19 170	13 730	*15 010	10 090	11 750	7 870	-	-	10 230	6 890	9 928
	-1.5 m	kg	*14 040	*14 040	*25 880	21 010	*19 340	13 610	15 210	9 980	11 700	7 820	-	-	10 950	7 350	9 454
	-3.0 m	kg	*23 910	*23 910	*24 290	21 190	*18 570	13 670	*14 630	10 020	-	-	-	-	*11 980	8 280	8 694
	-4.5 m	kg	*28 410	*28 410	*21 330	*21 330	*16 470	13 910	*12 380	10 280	-	-	-	-	*12 190	10 170	7 562
Boom: 7.0 m Arm: 3.9 m Shoe: 600mm CWT: 9750kg	9.0 m	kg	-	-	-	-	-	-	-	-	-	-	-	-	*8 370	*8 370	8 244
	7.5 m	kg	-	-	-	-	-	-	-	-	*9 250	8 710	-	-	*7 930	*7 930	9 288
	6.0 m	kg	-	-	-	-	-	-	*9 780	*9 780	*9 410	8 620	-	-	*7 770	7 210	9 999
	4.5 m	kg	-	-	-	-	*12 610	*12 610	*10 930	*10 930	*9 990	8 420	-	-	*7 840	6 620	10 444
	3.0 m	kg	-	-	*20 840	*20 840	*15 060	14 770	*12 300	10 690	*10 760	8 170	9 550	6 460	*8 090	6 300	10 659
	1.5 m	kg	-	-	*21 560	21 350	*17 210	14 070	*13 600	10 280	*11 530	7 940	9 420	6 340	*8 570	6 200	10 657
	0 m	kg	-	-	*21 410	20 800	*18 610	13 610	*13 600	9 980	11 650	7 760	-	-	*9 320	6 320	10 439
	-1.5 m	kg	*14 060	*14 060	*25 990	20 670	*19 130	13 410	*15 010	9 820	11 550	7 670	-	-	9 990	6 680	9 989
	-3.0 m	kg	*21 670	*21 670	*24 880	20 780	*18 740	13 400	*14 760	9 800	11 590	7 700	-	-	11 130	7 420	9 275
	-4.5 m	kg	*31 060	*31 060	*22 520	21 090	*17 220	13 580	*13 380	9 960	-	-	-	-	*11 590	8 860	8 224
Boom: 7.0 m Arm: 4.8 m Shoe: 600mm CWT: 9750kg	-6.0 m	kg	-	-	*18 130	*18 130	*13 640	*13 640	-	-	-	-	-	-	*11 580	*11 580	6 678
	9.0 m	kg	-	-	-	-	-	-	-	-	*8 030	*8 030	-	-	*7 580	*7 580	9 163
	7.5 m	kg	-	-	-	-	-	-	-	-	*7 860	*7 860	-	-	*7 290	7 210	10 111
	6.0 m	kg	-	-	-	-	-	-	-	-	*8 220	*8 220	*8 250	6 700	*7 220	6 400	10 766
	4.5 m	kg	-	-	-	-	-	-	*9 570	*9 570	*8 910	8 470	*8 550	6 580	*7 320	5 900	11 181
	3.0 m	kg	-	-	*17 570	*17 570	*13 220	*13 220	*11 040	10 780	*9 780	8 180	*9 030	6 420	*7 580	5 620	11 382
	1.5 m	kg	-	-	*21 990	21 710	*15 670	14 180	*12 510	10 280	*10 680	7 880	9 350	6 250	*8 020	5 520	11 380
	0 m	kg	-	-	*24 650	20 720	*17 530	13 550	*13 720	9 890	*11 460	7 640	9 200	6 110	8 400	5 580	11 176
	-1.5 m	kg	*14 240	*14 240	*25 660	20 310	*18 570	13 190	*14 500	9 630	11 360	7 470	9 110	6 040	8 810	5 840	10 758
	-3.0 m	kg	*19 870	*19 870	*25 380	20 250	*18 750	13 070	*14 700	9 530	11 300	7 420	-	-	9 640	6 370	10 098
Boom: 7.0 m Arm: 4.8 m Shoe: 600mm CWT: 9750kg	-4.5 m	kg	*27 230	*27 230	*23 910	20 450	*17 970	13 140	*14 090	9 580	*11 110	7 520	-	-	*10 820	7 370	9 145
	-6.0 m	kg	*29 270	*29 270	*20 870	*20 870	*15 820	13 430	*12 010	9 850	-	-	-	-	*11 290	9 380	7 787

LIFTING CAPACITY EC380DLR

			4.5 m		6.0 m		7.5 m		9.0 m		10.5 m		12.0 m		Max. reach		
			Along UC	Across UC	Along UC	Across UC	Along UC	Across UC	Along UC	Across UC	Along UC	Across UC	Along UC	Across UC	Along UC	Across UC	mm
Boom: 8.5 m Arm: 5.0 m Shoe: 800mm CWT: 8500kg	10.5 m	kg	-	-	-	-	-	-	-	-	-	-	-	-	*5 170	*5 170	10 111
	9.0 m	kg	-	-	-	-	-	-	-	-	*5 440	*5 440	-	-	*4 920	4 830	11 195
	7.5 m	kg	-	-	-	-	-	-	-	-	*5 520	5 440	-	-	*4 790	4 210	11 995
	6.0 m	kg	-	-	-	-	-	-	*6 050	*6 050	*5 830	5 310	*5 770	4 170	*4 770	3 810	12 564
	4.5 m	kg	-	-	-	-	*7 610	*7 610	*6 780	6 550	*6 280	5 120	*6 010	4 080	*4 830	3 540	12 934
	3.0 m	kg	-	-	*11 240	11 120	*8 910	8 120	*7 610	6 230	*6 820	4 920	6 160	3 960	*4 970	3 380	13 122
	1.5 m	kg	-	-	*13 190	10 330	*10 150	7 640	*8 430	5 920	*7 370	4 730	6 040	3 840	*5 200	3 310	13 135
	0 m	kg	-	-	*14 550	9 830	*11 150	7 280	9 000	5 680	7 200	4 560	5 930	3 740	*5 290	3 320	12 974
	-1.5 m	kg	*9 860	*9 860	*15 280	9 580	11 460	7 050	8 810	5 510	7 080	4 450	5 860	3 680	5 460	3 420	12 633
	-3.0 m	kg	*13 220	*13 220	*15 500	9 500	11 350	6 950	8 720	5 420	7 020	4 390	5 860	3 680	5 800	3 640	12 096
	-4.5 m	kg	*17 640	14 850	*15 250	9 560	11 360	6 960	8 720	5 420	7 050	4 420	-	-	6 380	4 020	11 335
	-6.0 m	kg	*18 830	15 160	*14 470	9 730	11 490	7 070	8 830	5 520	-	-	-	-	7 380	4 670	10 300
	-7.5 m	kg	*16 650	15 630	*12 950	10 040	*10 300	7 320	-	-	-	-	-	-	*8 130	5 880	8 893
	-9.0 m	kg	*12 990	*12 990	*9 990	*9 990	-	-	-	-	-	-	-	-	*8 310	*8 310	6 889

LIFTING CAPACITY EC480DLR, FIXED UNDERCARRIAGE

			4.5 m		6.0 m		7.5 m		9.0 m		10.5 m		12.0 m		Max. reach		
			Along UC	Across UC	Along UC	Across UC	Along UC	Across UC	Along UC	Across UC	Along UC	Across UC	Along UC	Across UC	Along UC	Across UC	mm
Boom: 8.5 m Arm: 5.0 m Shoe: 800mm CWT: 8500kg	12.0 m	kg	-	-	-	-	-	-	-	-	-	-	-	-	*5 190	*5 190	11 167
	10.5 m	kg	-	-	-	-	-	-	-	-	*5 340	*5 340	-	-	*4 830	*4 830	12 330
	9.0 m	kg	-	-	-	-	-	-	-	-	*5 180	*5 180	-	-	*4 610	4 420	13 221
	7.5 m	kg	-	-	-	-	-	-	-	-	*5 290	*5 290	*5 440	4 240	*4 490	3 960	13 892
	6.0 m	kg	-	-	-	-	-	-	-	-	*5 560	5 260	*5 520	4 190	*4 440	3 640	14 374
	4.5 m	kg	-	-	-	-	-	-	*6 300	*6 300	*5 940	5 080	*5 740	4 090	*4 450	3 430	14 686
	3.0 m	kg	*11 680	*11 680	*9 230	*9 230	*7 830	7 670	*6 950	6 050	*6 380	4 870	*6 020	3 960	*4 520	3 290	14 839
	1.5 m	kg	*13 930	12 590	*10 660	9 310	*8 790	7 210	*7 610	5 750	*6 840	4 670	6 300	3 830	*4 660	3 230	14 837
	0 m	kg	*15 600	11 810	*11 860	8 760	*9 640	6 830	*8 220	5 490	*7 270	4 490	6 180	3 720	*4 870	3 240	14 682
	-1.5 m	kg	*16 620	11 370	*12 720	8 390	*10 310	6 560	*8 730	5 290	7 240	4 350	6 100	3 650	*5 170	3 330	14 367
	-3.0 m	kg	*17 090	11 190	*13 240	8 200	10 750	6 390	8 630	5 160	7 150	4 270	6 080	3 620	*5 580	3 500	13 883
	-4.5 m	kg	*17 080	11 180	*13 400	8 140	10 680	6 320	8 590	5 120	7 140	4 270	-	-	*6 190	3 790	13 209
	-6.0 m	kg	*16 590	11 320	*13 160	8 210	10 730	6 370	8 640	5 170	7 260	4 370	-	-	7 050	4 260	12 314
	-7.5 m	kg	*15 510	11 600	*12 400	8 400	*10 120	6 540	*8 210	5 360	-	-	-	-	*7 300	5 030	11 145
	-9.0 m	kg	*13 580	12 060	*10 810	8 770	*8 470	6 900	-	-	-	-	-	-	*7 390	6 420	9 601

LIFTING CAPACITY EC480DLR, RETRACTABLE UNDERCARRIAGE

			4.5 m		6.0 m		7.5 m		9.0 m		10.5 m		12.0 m		Max. reach		
			Along UC	Across UC	Along UC	Across UC	Along UC	Across UC	Along UC	Across UC	Along UC	Across UC	Along UC	Across UC	Along UC	Across UC	mm
Boom: 8.5 m Arm: 5.0 m Shoe: 800mm CWT: 8500kg	12.0 m	kg	-	-	-	-	-	-	-	-	-	-	-	-	*5 190	*5 190	11 167
	10.5 m	kg	-	-	-	-	-	-	-	-	*5 340	*5 340	-	-	*4 830	*4 830	12 330
	9.0 m	kg	-	-	-	-	-	-	-	-	*5 180	*5 180	-	-	*4 610	*4 610	13 221
	7.5 m	kg	-	-	-	-	-	-	-	-	*5 290	*5 290	*5 440	4 560	*4 490	4 260	13 892
	6.0 m	kg	-	-	-	-	-	-	-	-	*5 560	*5 560	*5 520	4 510	*4 440	3 930	14 374
	4.5 m	kg	-	-	-	-	-	-	*6 300	*6 300	*5 940	5 440	*5 740	4 400	*4 450	3 710	14 686
	3.0 m	kg	*11 680	*11 680	*9 230	*9 230	*7 830	*7 830	*6 950	6 490	*6 380	5 240	*6 020	4 270	*4 520	3 570	14 839
	1.5 m	kg	*13 930	13 580	*10 660	10 010	*8 790	7 750	*7 610	6 180	*6 840	5 030	*6 320	4 150	*4 660	3 510	14 837
	0 m	kg	*15 600	12 780	*11 860	9 450	*9 640	7 360	*8 220	5 920	*7 270	4 850	6 290	4 040	*4 870	3 520	14 682
	-1.5 m	kg	*16 620	12 340	*12 720	9 080	*10 310	7 080	*8 730	5 720	7 360	4 720	6 210	3 960	*5 170	3 610	14 367
	-3.0 m	kg	*17 090	12 150	*13 240	8 880	*10 760	6 910	8 770	5 590	7 270	4 640	6 180	3 940	*5 580	3 800	13 883
	-4.5 m	kg	*17 080	12 150	*13 400	8 820	10 850	6 850	8 730	5 550	7 260	4 630	-	-	*6 190	4 110	13 209
	-6.0 m	kg	*16 590	12 290	*13 160	8 890	*10 770	6 900	8 780	5 600	7 380	4 740	-	-	*7 090	4 610	12 314
	-7.5 m	kg	*15 510	12 570	*12 400	9 090	*10 120	7 060	*8 210	5 790	-	-	-	-	*7 300	5 430	11 145
	-9.0 m	kg	*13 580	13 040	*10 810	9 460	*8 470	7 440	-	-	-	-	-	-	*7 390	6 910	9 601

MAXIMUM PERMITTED BUCKETS

Direct fit Buckets		EC380DL with 7 000 kg counterweight				EC480DL* with 9 050 kg counterweight						EC480DL** with 9 750 kg counterweight							
Boom	m	6.45			6.2	7.0					6.5		7.0					6.5	
Arm	m	2.6	3.2	3.9	2.6	2.55	3.0	3.35	3.9	4.8	2.55	3.0	2.55	3.0	3.35	3.9	4.8	2.55	3.0
Max. Bucket	t/m³	liter	liter	liter	liter	liter	liter	liter	liter	liter	liter	liter	liter	liter	liter	liter	liter	liter	liter
GP Bucket	1.5 t/m³	2 775	2 550	2 300	2 775	3 425	3 275	3 125	2 850	2 525	3 725	3 575	3 625	3 450	3 300	3 025	2 675	3 950	3 775
GP Bucket	1.8 t/m³	2 450	2 250	2 050	2 450	3 000	2 875	2 725	2 500	2 225	3 275	3 125	3 175	3 025	2 875	2 650	2 350	3 450	3 300
HD Bucket	1.8 t/m³	2 325	2 125	1 925	2 325	2 775	2 650	2 525	2 300	2 050	3 000	2 900	2 925	2 800	2 650	2 425	2 150	3 175	3 050
HD Bucket	2.0 t/m³	2 175	2 000	1 800	2 175	2 575	2 450	2 325	2 150	1 900	2 800	2 675	2 700	2 600	2 475	2 250	2 000	2 950	2 825

S quick fit Buckets		EC380DL with 7 000 kg counterweight				EC480DL* with 9 050 kg counterweight						EC480DL** with 9 750 kg counterweight							
Boom	m	6.45			6.2	7.0					6.5		7.0					6.5	
Arm	m	2.6	3.2	3.9	2.6	2.55	3.0	3.35	3.9	4.8	2.55	3.0	2.55	3.0	3.35	3.9	4.8	2.55	3.0
Max. Bucket	t/m³	liter	liter	liter	liter	liter	liter	liter	liter	liter	liter	liter	liter	liter	liter	liter	liter	liter	liter
GP Bucket	1.5 t/m³	2 600	2 350	2 125	2 600	3 300	3 150	2 975	2 725	2 400	3 600	3 450	3 475	3 325	3 150	2 875	2 550	3 800	3 650
GP Bucket	1.8 t/m³	2 300	2 100	1 875	2 300	2 875	2 750	2 600	2 375	2 100	3 150	3 025	3 050	2 900	2 750	2 525	2 225	3 325	3 175
HD Bucket	1.8 t/m³	2 175	1 975	1 775	2 175	2 650	2 525	2 400	2 200	1 925	2 900	2 775	2 800	2 675	2 550	2 325	2 050	3 075	2 950
HD Bucket	2.0 t/m³	2 025	1 850	1 675	2 025	2 475	2 350	2 225	2 050	1 800	2 700	2 575	2 600	2 475	2 375	2 150	1 900	2 850	2 725

U quick fit Buckets		EC380DL with 7 000 kg counterweight				EC480DL* with 9 050 kg counterweight						EC480DL** with 9 750 kg counterweight							
Boom	m	6.45			6.2	7.0					6.5		7.0					6.5	
Arm	m	2.6	3.2	3.9	2.6	2.55	3.0	3.35	3.9	4.8	2.55	3.0	2.55	3.0	3.35	3.9	4.8	2.55	3.0
Max. Bucket	t/m³	liter	liter	liter	liter	liter	liter	liter	liter	liter	liter	liter	liter	liter	liter	liter	liter	liter	liter
GP Bucket	1.5 t/m³	2 425	2 200	1 950	2 425	3 125	2 975	2 800	2 550	2 225	3 425	3 275	3 300	3 150	2 975	2 700	2 350	3 625	3 475
GP Bucket	1.8 t/m³	2 150	1 950	1 725	2 150	2 725	2 600	2 450	2 225	1 950	3 000	2 850	2 900	2 750	2 600	2 375	2 075	3 175	3 025
HD Bucket	1.8 t/m³	2 025	1 825	1 650	2 025	2 525	2 400	2 275	2 050	1 800	2 750	2 650	2 675	2 525	2 400	2 175	1 900	2 925	2 800
HD Bucket	2.0 t/m³	1 900	1 700	1 525	1 900	2 325	2 225	2 100	1 900	1 675	2 550	2 450	2 475	2 350	2 225	2 025	1 775	2 725	2 600

Note: 1. Bucket size based on ISO 7451, heaped material with a 1:1 angle of repose.
 2. "Max. permitted sizes" are for reference only and are not necessarily available from the factory.
 3. Bucket widths are less than bucket's tip radius.

* FIXED UNDERCARRIAGE

** RETRACTABLE UNDERCARRIAGE

STANDARD EQUIPMENT

	EC380D	EC480D
Engine		
Turbocharged, 4 stroke diesel engine with water cooling, direct injection and charged air cooler	•	•
Air filter with indicator	•	•
Air intake heater	•	•
Cyclone pre-cleaner	•	•
Electric engine shut-off	•	•
Fuel filter and water separator	•	•
Alternator, 80 A	•	•
Electric/Electronic control system		
Contronics	•	•
– Advanced mode control system	•	•
– Self-diagnostic system	•	•
Machine status indication	•	•
Engine speed sensing power control	•	•
Automatic idling system	•	•
One-touch power boost	•	•
Safety stop/start function	•	•
Adjustable LCD color monitor	•	•
Master electrical disconnect switch	•	•
Engine restart prevention circuit	•	•
High-capacity halogen lights:	•	•
– Frame-mounted 2	•	•
– Boom-mounted 2	•	•
Batteries, 2 x 12 V / 200 Ah	•	•
Start motor, 24 V / 7 kW	•	•
Hydraulic system		
Automatic sensing hydraulic system	•	•
– Summation system	•	•
– Boom priority	•	•
– Arm priority	•	•
– Swing priority	•	•
“ECO” mode fuel saving technology	•	•
Boom and arm regeneration valves	•	•
Swing anti-rebound valves	•	•
Boom and arm holding valves	•	•
Multi-stage filtering system	•	•
Cylinder cushioning	•	•
Cylinder contamination seals	•	•
Auxiliary hydraulic valve	•	•
Automatic two-speed travel motors	•	•
Hydraulic oil, ISO VG 46	•	•
Frame		
Access way with handrail	•	•
Tool storage area	•	•
Punched metal anti-slip plates	•	•
Under cover	•	•
Cab and interior		
Silicon oil and rubber mounts with spring	•	•
Adjustable operator seat with heater and joystick control console	•	•
Control joysticks with 4 switches each	•	•
Heater & air-conditioner, automatic	•	•
Flexible antenna	•	•
AM/FM stereo with CD player, MP3 and USB input	•	•
Hydraulic safety lock lever	•	•

	EC380D	EC480D
Cab, all-weather sound suppressed, includes:		
– Cup holders	•	•
– Door locks	•	•
– Tinted glass	•	•
– Floor mat	•	•
– Horn	•	•
– Large storage area	•	•
– Pull-up type front window	•	•
– Removable lower windshield	•	•
– Seat belt	•	•
– Safety glass	•	•
– Sun screens, front, roof, rear	•	•
– Rain shield	•	•
– Windshield wiper with intermittent feature	•	•
Master key	•	•
Undercarriage		
Under cover (heavy duty)	•	•
Hydraulic track adjusters	•	•
Greased and sealed track link	•	•
Track Guard	•	•